



## Residential Products Catalog 9.18



Amana is a registered trademark of Maytag Corporation or its related companies and is used under license. All rights reserved.

Premium Amana®  
Brand Quality

**Amana brand heating  
and cooling systems  
are a part of the  
tried and true  
legacy of one  
of America's  
most  
recognized  
and  
respected  
brands.**



**Split Systems 5**

**Air Conditioners**

AVXC20	Up to 24.5 SEER	6
ASXC18	Up to 19 SEER	7
ASXC16	Up to 16 SEER	8
ASX16	Up to 16 SEER	9
ASX14	Up to 15 SEER	10
ANX14	Up to 15 SEER	11
ASX13	Up to 14 SEER	12
ANX13	Up to 14 SEER	13

**Heat Pumps**

AVZC20	Up to 21 SEER & 10.0 HSPF	14
AVZC18	Up to 19 SEER & 10.0 HSPF	15
ASZC18	Up to 19 SEER & 10.0 HSPF	16
ASZC16	Up to 16 SEER & 9.7 HSPF	17
ASZ16	Up to 16 SEER & 9.5 HSPF	18
ASZ14	Up to 15 SEER & 9.0 HSPF	19
ANZ14	Up to 15 SEER & 8.5 HSPF	20

**Gas Furnaces 21**

**90+% AFUE Gas Furnaces**

AMVM97	Up to 98% AFUE	22
ACVM97	Up to 97% AFUE	23
AMVC96 (B)	Up to 96% AFUE	24
ACVC96 (B)	Up to 96% AFUE	25
AMSS96/ACSS96	Up to 96% AFUE	26
AMEC96	Up to 96% AFUE	27
ACEC96	Up to 96% AFUE	28
AMSS92/ACSS92	Up to 92% AFUE	29

**80% AFUE Gas Furnaces**

AMVC8/ACVC8	80% AFUE	30
AMEH8	80% AFUE	31
AMH8	80% AFUE	32
AMS8	80% AFUE	33
ADSH8	80% AFUE	34
ADSS8	80% AFUE	35

**Air Handlers & Evaporator Coils 37**

**Air Handlers**

AVPEC	Multi-Position, Variable-Speed	38
AVPTC	Multi-Position, Variable-Speed	39
ASPT	Multi-Position, Multi-Speed ECM	40
ARUF	Multi-Position, Direct Drive	41
MBVC/MBR	Multi-Position Modular Blowers	42
AWUF	Wall Mount	43
AWUT	Wall Mount	44
ACNF	Ceiling-Mounted	45

**Evaporator Coils**

CAPT Cased Indoor "A" Coil, Internal TXVs	46
CAPF Cased Indoor "A" Coil, Upflow/Downflow	47
CAUF Uncased Indoor "A" Coil	48
CHPF Cased Indoor "A" Coil, Horizontal	49
CSCF Cased Indoor Slab Coil	50

**Packaged Units 51**

**Air Conditioners**

APC15H	Up to 15 SEER	52
APC14M	14 SEER	53
APC14H	14 SEER	54

**Heat Pumps**

APH16M	Up to 16 SEER / Up to 8.2 HSPF	55
APH16H	Up to 16 SEER / Up to 8.2 HSPF	56
APH14M	14 SEER / 8.0 HSPF	57
APH14H	Up to 14.5 SEER / 8.0 HSPF	58

**Gas-Electric**

APG16M	Up to 16 SEER / 81% AFUE	59
APG14M	14 SEER / 81% AFUE	60

**Dual Fuel**

APD14M	Up to 14.5 SEER / 81% AFUE / 8.0 HSPF	61
--------	---------------------------------------	----

**Controls & Thermostats 63**

ComfortNet® Controller CTK04	64
Touchscreen Thermostats AT4272, AT4273	65

# REGIONAL EFFICIENCY STANDARDS

**U.S. Department of Energy (DOE) minimum efficiency changes went into effect on January 1, 2015**, affecting all residential air conditioners and heat pumps we manufacture. One additional change implemented that adds complication is regional standards that apply to Split System and Package Air Conditioners. Now, the DOE minimum efficiency standards include both national standards (which are based on date of manufacture) and regional standards (which are based on date of installation).

## National Standards

- Split system heat pumps (14 SEER / 8.2 HSPF)
- Single package heat pumps (14 SEER / 8.0 HSPF)
- Single package air conditioner (14 SEER)
- Single package gas/electric (14 SEER / 81% AFUE)
- Gas fired furnaces (80% AFUE)
- Kept 13 SEER base national standard for split-system air conditioners

## Efficiency Standards

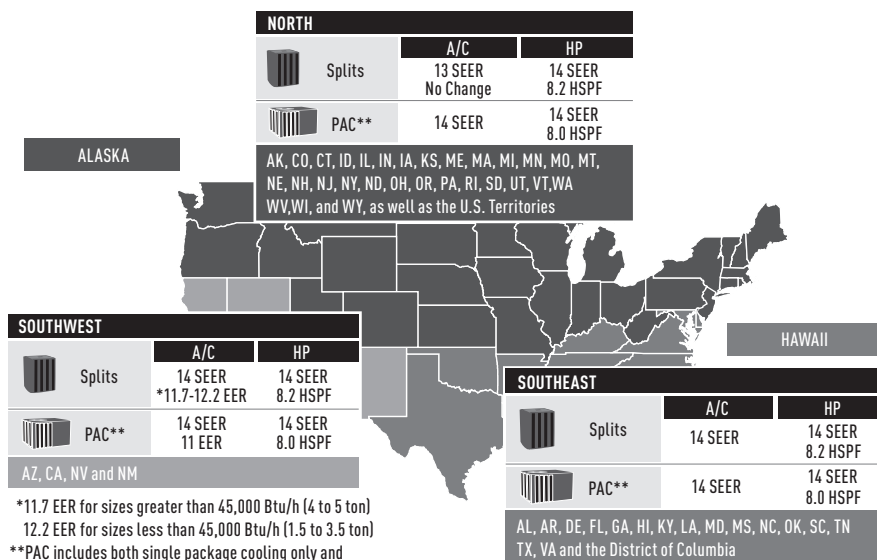
The map below summarizes the national and regional efficiency standards.

## Labeling

There are two methods to help identify products subject to regional standards. The first is the EnergyGuide label that is noticeably different, with the inclusion of the map of the United States that identifies where the equipment can be installed.

The second is a separate statement that will be on the rating plate or on a label next to the rating plate called the “Install Prohibited” statement. All products subject to regional standards have both the EnergyGuide label and the Install Prohibited statement.

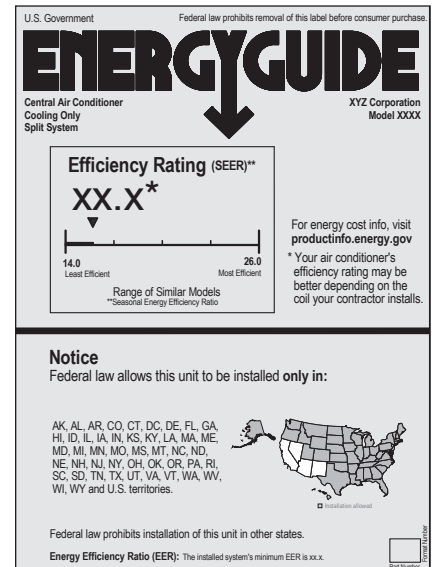
**NOTE:** The Federal Trade Commission (FTC) originally required a range of SEER be placed on Split System products subject to regional efficiency standards. However, they reversed their decision and now only a single value is listed (since mid-2017). Products in inventory may have mixed EnergyGuide labels (some having a range, others having a single value for SEER).



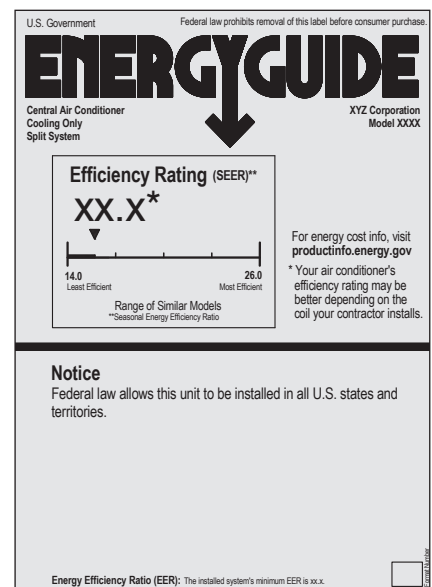
\*11.7 EER for sizes greater than 45,000 Btu/h (4 to 5 ton)  
12.2 EER for sizes less than 45,000 Btu/h (1.5 to 3.5 ton)  
\*\*PAC includes both single package cooling only and single package gas/electric models

Regional standards apply only to single phase air conditioners, 5 ton and less

## EnergyGuide Labels Currently In Effect



Subject to regional standards



Can be installed anywhere



### What You Need to Know as a Distributor

DOE defines a distributor as “a person (other than a manufacturer or retailer) to whom a consumer product is delivered or sold for purposes of distribution in commerce.” Therefore, if you resell product for sale other than to an end user, you may be considered a distributor as opposed to a contractor or dealer (see definitions below).

Distributors are required to comply with new requirements:

1. Do not knowingly sell product that will be installed in violation of regional standards.
2. Conduct regional standards training for all employees and customers.
3. Maintain records for all units subject to the regional standards for a period of 54 months. These records are to include the outdoor unit manufacturer, model number, serial number, date of purchase, date of sale, customer name and delivery address if delivered.

### What You Need to Know as a Contractor/Dealer

As a contractor or dealer, you will also be required to adhere to requirements of the DOE 2015 HVAC Regional Standards Enforcement Rules. DOE has defined a contractor as “a person (other than the manufacturer or distributor) who sells to and/or installs for an end user a central air conditioner subject to

regional standards.” DOE has defined a dealer as “a type of contractor, generally with a relationship with one or more specified manufacturers.” The contractor/dealer requirements include the following:

1. Do not knowingly install product that is in violation of regional standards.
2. Conduct regional standards training for all employees.
3. Maintain records for all units subject to the regional standards for a period of 48 months. These records to include the indoor and outdoor unit manufacturer and model number, outdoor unit serial number, distributor purchased from, date and address of installation.

### Enforcement

Enforcement of the standards will be at least partially via complaints registered with the DOE. DOE has set up an email for reporting suspected violations directly to them at [EnergyEfficiencyEnforcement@doe.gov](mailto:EnergyEfficiencyEnforcement@doe.gov), or suspected violations can be reported by phone, at (202) 287-6997.

All verified violations will require remediation and can result in stiff fines. Notices of Violation will be posted publicly by the DOE. Further, if a distributor or contractor/dealer is found to routinely violate the standards, manufacturers can be prohibited from selling products to that party.

Contractors, dealers and distributors should be aware that the DOE may request copies of documentation proving product sales and installations are in compliance. Records requested by DOE must be provided within 30 days.

### Training

A recorded webinar providing details about the efficiency standards is available for viewing at [www.amana-hac.com/standards](http://www.amana-hac.com/standards). Questions about the efficiency standards can be emailed to [RegionalStandardsQuestions@goodmanmfg.com](mailto:RegionalStandardsQuestions@goodmanmfg.com).

### IMPORTANT NOTE:

The information provided is a summarized overview and is not intended to provide a complete description of the DOE 2015 Regional Standards. For more information regarding the DOE 2015 HVAC Regional Standards and the enforcement of these standards, please visit <https://energy.gov/gc/regional-standardsenforcement>.





# SPLIT SYSTEMS



## SPLIT SYSTEM **AIR CONDITIONERS**

### AVXC20 / Variable-Speed / Inverter-Driven / Up to 24.5 SEER

Model	Nominal Capacity (Tons)	Voltage-Phase	Dimensions			Service Valve		dBs <sup>1</sup>	Ship Weight (lbs)	ENERGY STAR® Certified <sup>2</sup>
			W"	D"	H"	Liquid"	Suction"			
AVXC200241A*	2	208/230-1	35½	35½	38¼	¾	¾	59/66/71	228	YES
AVXC200361A*	3	208/230-1	35½	35½	38¼	¾	¾	63/66/74	236	YES
AVXC200481A*	4	208/230-1	35½	35½	41¾	¾	¾	64/70/75	288	YES
AVXC200601A*	5	208/230-1	35½	35½	41¾	¾	¾	57/65/75	330	YES

<sup>1</sup> Minimum/Intermediate/Maximum sound levels

<sup>2</sup> Proper sizing and installation of equipment is critical to achieve optimal performance. Split system air conditioners and heat pumps must be matched with appropriate coil components to meet **ENERGY STAR**® criteria. Ask your contractor for details or visit [www.energystar.gov](http://www.energystar.gov).

Goodman Manufacturing Company, L.P. reserves the right to discontinue, or change at any time, specifications or designs without notice or without incurring obligations.

#### Limited Warranty\*

\* Complete warranty details available from your local dealer or at [www.amana-hac.com](http://www.amana-hac.com). To receive the Lifetime Unit Replacement Limited Warranty (good for as long as you own your home) and 10-Year Parts Limited Warranty, online registration must be completed within 60 days of installation. Online registration is not required in California or Quebec.



The Amana® brand AVXC20 Air Conditioner features energy efficiencies and operating sound levels that are among the best in the residential ducted heating and cooling industry. The AVXC20 contains a variable speed, high-efficiency compressor. This unit is designed for the consumer who desires superb comfort and quiet operation.



#### Standard Features

- Variable-speed swing and scroll compressors
- High-density foam compressor sound blanket
- ComfortNet® Communicating Control System compatible
- Variable-speed ECM outdoor fan motor
- Control algorithmic logic
- In communicating mode, only two low-voltage wires to outdoor unit required
- Diagnostic indicator lights, seven-segment LED display, and fault code storage
- Field-selectable boost mode increases compressor speed during unusually high loads
- Factory-installed filter drier
- Coil and ambient temperature sensors
- AHRI Certified; ETL Listed

#### Cabinet Features

- Heavy-gauge, galvanized-steel cabinet with grille-style sound control top
- Baked-on powder-paint finish
- 500-hour salt-spray tested
- Wire fan discharge grille
- Steel louver coil guard
- Top and side maintenance access
- Sweat connection service valves with easy access to gauge ports
- Single-panel access to controls with space provided for field-installed accessories
- When properly anchored, meets the 2010 Florida Building Code unit integrity requirements for hurricane-type winds (Anchor bracket kits available.)



Products that are recognized as the Most Efficient of **ENERGY STAR**® in 2018 prevent greenhouse gas emissions by meeting rigorous energy efficiency performance levels set by the U.S. Environmental Protection Agency.

## ASXC18 / Two-Stage / High-Efficiency / Up to 19 SEER

Model	Nominal Capacity (Tons)	Voltage-Phase	Dimensions			Service Valve		dBs	Ship Weight (lbs)	ENERGY STAR® Certified <sup>1</sup>
			W"	D"	H"	Liquid"	Suction"			
ASXC180241B*	2	208/230-1	35¾	35¾	40	¾	¾	71	236	YES
ASXC180361B*	3	208/230-1	35¾	35¾	40	¾	¾	71	238	YES
ASXC180481B*	4	208/230-1	35¾	35¾	42¼	¾	7/8	74	298	YES
ASXC180601B*	5	208/230-1	35¾	35¾	42¼	¾	7/8	74	326	NO

<sup>1</sup> Proper sizing and installation of equipment is critical to achieve optimal performance. Split system air conditioners and heat pumps must be matched with appropriate coil components to meet **ENERGY STAR®** criteria. Ask your contractor for details or visit [www.energystar.gov](http://www.energystar.gov).

Goodman Manufacturing Company, L.P. reserves the right to discontinue, or change at any time, specifications or designs without notice or without incurring obligations.

### Limited Warranty\*

\* Complete warranty details available from your local dealer or at [www.amana-hac.com](http://www.amana-hac.com). To receive the Lifetime Unit Replacement Limited Warranty (good for as long as you own your home) and 10-Year Parts Limited Warranty, online registration must be completed within 60 days of installation. Online registration is not required in California or Quebec.



The **Amana** brand ASXC18 Air Conditioner contains the two-stage, high-efficiency scroll compressor. This unit is designed for the consumer who desires superb comfort and quiet operation.



### Standard Features

- High-efficiency two-stage scroll compressor
- High-density foam compressor sound blanket
- Integrated communicating ComfortBridge™ Technology
- Commissioning and diagnostics via indoor board Bluetooth with the CoolCloud™ phone and tablet application
- Expanded ComfortAlert diagnostics built in
- High-efficiency two-speed ECM condenser fan motor
- Set-up capable with two low-voltage wires to outdoor unit
- Diagnostic indicator lights and storage of six fault codes
- Color-coded terminal strip for non-communicating set-up
- Fully charged for 15' of tubing length
- Factory-installed filter drier
- Factory-installed transformer
- Coil and ambient temperature sensors
- AHRI Certified; ETL Listed

### Cabinet Features

- Heavy-gauge, galvanized-steel cabinet with grille-style sound control top
- Baked-on powder-paint finish
- Wire fan discharge grille
- Steel louver coil guard
- Rust-resistant coated screws
- Compact footprint
- Top and side maintenance access
- Single-panel access to controls with space provided for field-installed accessories
- When properly anchored, meets the 2010 Florida Building Code unit integrity requirements for hurricane-type winds (Anchor bracket kits available.)



## SPLIT SYSTEM **AIR CONDITIONERS**

### **ASXC16** / Two-Stage / High-Efficiency / Up to 16 SEER

Model	Nominal Capacity (Tons)	Voltage-Phase	Dimensions			Service Valve		dBs	Ship Weight (lbs)	ENERGY STAR® Certified <sup>1</sup>
			W"	D"	H"	Liquid"	Suction"			
<b>ASXC160241C*</b>	2	208/230-1	29	29	32¼	¾	¾	71	197	YES
<b>ASXC160361C*</b>	3	208/230-1	29	29	32¼	¾	7/8	71	223	YES
<b>ASXC160481C*</b>	4	208/230-1	35½	35½	36¼	¾	7/8	72	285	YES
<b>ASXC160601C*</b>	5	208/230-1	35½	35½	38¼	¾	7/8	74	326	YES

<sup>1</sup> Proper sizing and installation of equipment is critical to achieve optimal performance. Split system air conditioners and heat pumps must be matched with appropriate coil components to meet **ENERGY STAR®** criteria. Ask your contractor for details or visit [www.energystar.gov](http://www.energystar.gov). Refer to Specification Sheet for specific **ENERGY STAR®** certified combinations.

Goodman Manufacturing Company, L.P. reserves the right to discontinue, or change at any time, specifications or designs without notice or without incurring obligations.

#### Limited Warranty\*

\* Complete warranty details available from your local dealer or at [www.amana-hac.com](http://www.amana-hac.com). To receive the Lifetime Unit Replacement Limited Warranty (good for as long as you own your home) and 10-Year Parts Limited Warranty, online registration must be completed within 60 days of installation. Online registration is not required in California or Quebec.



The **Amana** brand ASXC16 Air Conditioner contains a two-stage, high-efficiency scroll compressor, which provides great temperature and humidity control for the consumer who desires superb comfort and quiet operation.



#### Standard Features

- High-efficiency two-stage scroll compressor
- High-density foam compressor sound blanket
- Integrated communicating ComfortBridge™ Technology
- Commissioning and diagnostics via indoor board Bluetooth with the CoolCloud™ phone and tablet application
- Expanded ComfortAlert diagnostics built in
- High-efficiency two-speed ECM condenser fan motor
- Set-up capable with two low-voltage wires to outdoor unit
- Diagnostic indicator lights and storage of six fault codes
- Color-coded terminal strip for non-communicating set-up
- Fully charged for 15' of tubing length
- Factory-installed filter drier
- Factory-installed transformer
- Coil and ambient temperature sensors
- AHRI Certified; ETL Listed

#### Cabinet Features

- Heavy-gauge, galvanized-steel cabinet with grille-style sound control top
- Baked-on powder-paint finish
- Wire fan discharge grille
- Steel louver coil guard
- Rust-resistant coated screws
- Compact footprint
- Top and side maintenance access
- Single-panel access to controls with space provided for field-installed accessories
- When properly anchored, meets the 2010 Florida Building Code unit integrity requirements for hurricane-type winds (Anchor bracket kits available.)

## ASX16 / High-Efficiency / Up to 16 SEER

Model	Nominal Capacity (Tons)	Voltage-Phase	Dimensions			Service Valve		dBs	Ship Weight (lbs)	ENERGY STAR® Certified <sup>1</sup>
			W"	D"	H"	Liquid"	Suction"			
ASX160181F*	1.5	208/230-1	29	29	32	3/8	3/4	71.5	163	YES
ASX160241F*	2	208/230-1	29	29	32	3/8	3/4	71.5	160	YES
ASX160301F*	2.5	208/230-1	29	29	35 3/4	3/8	7/8	71.5	167	YES
ASX160311A*	2.5	208/230-1	29	29	39 1/2	3/8	7/8	71.5	179	YES
ASX160361F*	3	208/230-1	29	29	39 1/2	3/8	7/8	71.5	180	YES
ASX160371A*	3	208/230-1	35 1/2	35 1/2	35 3/4	3/8	7/8	73	204	YES
ASX160421F*	3.5	208/230-1	35 1/2	35 1/2	35 3/4	3/8	7/8	73	228	YES
ASX160481F*	4	208/230-1	35 1/2	35 1/2	39 1/2	3/8	7/8	73	241	YES
ASX160601F*	4.5	208/230-1	35 1/2	35 1/2	37 3/4	3/8	7/8	73	301	YES
ASX160611F*	5	208/230-1	35 1/2	35 1/2	39 1/2	3/8	7/8	73	314	NO

<sup>1</sup> Proper sizing and installation of equipment is critical to achieve optimal performance. Split system air conditioners and heat pumps must be matched with appropriate coil components to meet **ENERGY STAR®** criteria. Ask your contractor for details or visit [www.energystar.gov](http://www.energystar.gov). Refer to Specification Sheet for specific **ENERGY STAR®** certified combinations.

Goodman Manufacturing Company, L.P. reserves the right to discontinue, or change at any time, specifications or designs without notice or without incurring obligations.

### Limited Warranty\*

\* Complete warranty details available from your local dealer or at [www.amana-hac.com](http://www.amana-hac.com). To receive the Lifetime Unit Replacement Limited Warranty (good for as long as you own your home) and 10-Year Parts Limited Warranty, online registration must be completed within 60 days of installation. Online registration is not required in California or Quebec.



The **Amana** brand ASX16 High-Efficiency Air Conditioner features a high-efficiency scroll compressor that provides great temperature and humidity control.



### Standard Features

- High-efficiency Copeland® scroll compressor
- Copeland CoreSense diagnostics
- High-density foam compressor sound blanket
- Single-speed ECM condenser fan motor
- Factory-installed filter drier
- Factory-installed high- and low-pressure switches
- Copper tube/ enhanced aluminum fin coil
- Fully charged for 15' of tubing length
- Sweat connection service valves with easy access to gauge ports
- AHRI Certified; ETL Listed

### Cabinet Features

- Heavy-gauge, galvanized-steel cabinet with sound control top
- Baked-on powder-paint finish
- Wire fan discharge grille
- Steel louver coil guard
- Top and side maintenance access
- Single-panel access to controls with space provided for field-installed accessories
- When properly anchored, meets the 2010 Florida Building Code unit integrity requirements for hurricane-type winds (Anchor bracket kits available.)

## ASX14 / Energy-Efficient / Up to 15 SEER & 12.5 EER

Model	Nominal Capacity (Tons)	Voltage-Phase	Dimensions			Service Valve		dBs	Ship Weight (lbs)
			W"	D"	H"	Liquid"	Suction"		
ASX140181K*	1½	208/230-1	26	26	27½	¾	¾	70	146
ASX140191K*	1½	208/230-1	26	26	27½	¾	¾	70	146
ASX140241L*	2	208/230-1	26	26	32½	¾	¾	71	153
ASX140251L*	2	208/230-1	26	26	32½	¾	¾	71	153
ASX140301K*	2½	208/230-1	29	29	32½	¾	¾	71	180
ASX140311K*	2½	208/230-1	29	29	32½	¾	¾	71	180
ASX140361K*	3	208/230-1	29	29	32½	¾	¾	72	180
ASX140371K*	3	208/230-1	29	29	32½	¾	¾	72	180
ASX140421K*	3½	208/230-1	29	29	36¼	¾	7⁄8	72	207
ASX140431K*	3½	208/230-1	29	29	36¼	¾	7⁄8	73	207
ASX140481K*	4	208/230-1	35½	35½	36¼	¾	7⁄8	73	242
ASX140601K*	5	208/230-1	35½	35½	38¼	¾	7⁄8	74	280

Goodman Manufacturing Company, L.P. reserves the right to discontinue, or change at any time, specifications or designs without notice or without incurring obligations.

### Limited Warranty\*

\* Complete warranty details available from your local dealer or at [www.amana-hac.com](http://www.amana-hac.com). To receive the 10-Year Parts Limited Warranty, online registration must be completed within 60 days of installation. Online registration is not required in California or Quebec.



The Amana brand ASX14 Energy-Efficient Air Conditioner features an energy-efficient scroll compressor that provides great temperature and humidity control.



### Standard Features

- Energy-efficient scroll compressor
- High-density foam compressor sound blanket
- Copeland® ComfortAlert™ diagnostics
- Single-speed ECM condenser fan motor
- Factory-installed filter drier
- Copper tube / enhanced aluminum fin coil
- Sweat connection service valves with easy access to gauge ports
- Contactor with lug connection
- Ground lug connection
- AHRI Certified; ETL Listed

### Cabinet Features

- Heavy-gauge, galvanized-steel cabinet with sound control top
- Attractive Architectural Gray powder-paint finish with 500-hour salt-spray approval
- Wire fan discharge grille
- Steel louver coil guard
- Compact footprint
- Top and side maintenance access
- Single-panel access to controls with space provided for field-installed accessories
- When properly anchored, meets the 2010 Florida Building Code unit integrity requirements for hurricane-type winds (Anchor bracket kits available.)



## ANX14 / Energy-Efficient / Up to 15 SEER

Model	Nominal Capacity (Tons)	Voltage-Phase	Dimensions			Service Valve		dBs	Ship Weight (lbs)
			W"	D"	H"	Liquid"	Suction"		
ANX140181B*	1½	208/230-1	26	26	27½	¾	¾	73	141
ANX140191A*	1½	208/230-1	26	26	27½	¾	¾	71	146
ANX140241B*	2	208/230-1	26	26	27½	¾	¾	74	141
ANX140251B*	2	208/230-1	26	26	32½	¾	¾	71	153
ANX140301B*	2½	208/230-1	29	29	36¼	¾	¾	74	211
ANX140311A*	2½	208/230-1	29	29	32½	¾	¾	72	180
ANX140361A*	3	208/230-1	29	29	32½	¾	¾	73	180
ANX140371A*	3	208/230-1	29	29	32½	¾	¾	73	180
ANX140421A*	3½	208/230-1	29	29	36¼	¾	7/8	73	207
ANX140431A*	3½	208/230-1	29	29	36¼	¾	7/8	73	207
ANX140481A*	4	208/230-1	35½	35½	36¼	¾	7/8	74	242
ANX140601A*	5	208/230-1	35½	35½	38¼	¾	7/8	75	280

Goodman Manufacturing Company, L.P. reserves the right to discontinue, or change at any time, specifications or designs without notice or without incurring obligations.

### Limited Warranty\*

\* Complete warranty details available from your local dealer or at [www.amana-hac.com](http://www.amana-hac.com). To receive the 10-Year Parts Limited Warranty, online registration must be completed within 60 days of installation. Online registration is not required in California or Quebec.



The Amana brand ANX14 Energy-Efficient Air Conditioner features an energy-efficient scroll compressor that provides great temperature and humidity control.



### Standard Features

- Energy-efficient compressor
- Single-speed ECM condenser fan motor
- Factory-installed filter drier
- Copper tube/aluminum fin coil
- Service valves with sweat connections and easy-access gauge ports
- Contactor with lug connection
- Ground lug connection
- AHRI Certified; ETL Listed

### Cabinet Features

- Heavy-gauge galvanized-steel cabinet with louvered sound control top design
- Steel louver coil guard
- Attractive Architectural Gray powder-paint finish with 500-hour salt-spray approval
- Top and side maintenance access
- Single-panel access to controls with space provided for field-installed accessories
- When properly anchored, meets the 2010 Florida Building Code unit integrity requirements for hurricane-type winds (Anchor bracket kits available.)

## ASX13 / Energy-Efficient / Up to 14 SEER

Model	Nominal Capacity (Tons)	Voltage-Phase	Dimensions			Service Valve		dBs	Ship Weight (lbs)
			W"	D"	H"	Liquid"	Suction"		
ASX130181D*	1½	208/230-1	26	26	27½	¾	¾	75	117
ASX130241C*	2	208/230-1	26	26	27½	¾	¾	75	128
ASX130301C*	2½	208/230-1	26	26	27½	¾	¾	73	132
ASX130361D*	3	208/230-1	26	26	27½	¾	¾	74	135
ASX130421C*	3½	208/230-1	29	29	36¼	¾	7/8	75	189
ASX130481C*	4	208/230-1	29	29	36¼	¾	7/8	76	193
ASX130601C*	5	208/230-1	29	29	40	¾	7/8	77	202
ASX130611A*	5	208/230-1	35½	35½	38¼	¾	7/8	77	233

Goodman Manufacturing Company, L.P. reserves the right to discontinue, or change at any time, specifications or designs without notice or without incurring obligations.

**This product may not be installed in the Southeast (including Hawaii) or Southwest Regions as of Jan. 1, 2015 (see pp. 4-5 for details).**

### Limited Warranty\*

\* Complete warranty details available from your local dealer or at [www.amana-hac.com](http://www.amana-hac.com). To receive the 10-Year Parts Limited Warranty, online registration must be completed within 60 days of installation. Online registration is not required in California or Quebec.



The Amana brand ASX13 Energy-Efficient Air Conditioner uses R-410A chlorine-free refrigerant. The ASX13 features an energy-efficient scroll compressor that provides great temperature and humidity control.



### Standard Features

- Energy-efficient scroll compressor
- High-density foam compressor sound blanket
- Copeland® ComfortAlert™ diagnostics
- Factory-installed filter drier
- Copper tube / enhanced aluminum fin coil
- Sweat connection service valves with easy access to gauge ports
- Contactor with lug connection
- Ground lug connection
- AHRI Certified; ETL Listed

### Cabinet Features

- Heavy-gauge, galvanized-steel cabinet with sound control top design
- Attractive Architectural Gray powder-paint finish with 500-hour salt-spray approval
- Wire fan discharge grille
- Steel louver coil guard
- Compact footprint
- Top and side maintenance access
- Single-panel access to controls with space provided for field-installed accessories

## ANX13 / Energy-Efficient / Up to 14 SEER

Model	Nominal Capacity (Tons)	Voltage-Phase	Dimensions			Service Valve		dBs	Ship Weight (lbs)
			W"	D"	H"	Liquid"	Suction"		
ANX130181B*	1½	208/230-1	26	26	27½	¾	¾	72	141
ANX130241B*	2	208/230-1	26	26	27½	¾	¾	75	120
ANX130301B*	2½	208/230-1	26	26	32½	¾	¾	74	153
ANX130361A*	3	208/230-1	26	26	27½	¾	¾	74	157
ANX130421A*	3½	208/230-1	29	29	36¼	¾	7/8	75	206
ANX130481A*	4	208/230-1	29	29	36¼	¾	7/8	76	225
ANX130601A*	5	208/230-1	29	29	40	¾	7/8	77	209
ANX130611A*	5	208/230-1	35½	35½	38¼	¾	7/8	77	231

Goodman Manufacturing Company, L.P. reserves the right to discontinue, or change at any time, specifications or designs without notice or without incurring obligations.

**This product may not be installed in the Southeast (including Hawaii) or Southwest Regions as of Jan. 1, 2015 (see pp. 4-5 for details).**

### Limited Warranty\*

\* Complete warranty details available from your local dealer or at [www.amana-hac.com](http://www.amana-hac.com). To receive the 10-Year Parts Limited Warranty, online registration must be completed within 60 days of installation. Online registration is not required in California or Quebec.



The Amana brand ANX13 Energy-Efficient Air Conditioner uses R-410A chlorine-free refrigerant. The ANX13 features an energy-efficient scroll compressor that provides great temperature and humidity control.



### Standard Features

- Energy-efficient compressor
- Single-speed ECM condenser fan motor
- Factory-installed filter drier
- Copper tube/aluminum fin coil
- Service valves with sweat connections and easy-access gauge ports
- Contactor with lug connection
- Ground lug connection
- AHRI Certified; ETL Listed

### Cabinet Features

- Heavy-gauge galvanized-steel cabinet with louvered sound control top
- Steel louver coil guard
- Attractive Architectural Gray powder-paint finish with 500-hour salt-spray approval
- Top and side maintenance access
- Single-panel access to controls with space provided for field-installed accessories

## AVZC20 / Variable-Speed / Inverter-Driven / Dual-Fuel / Up to 21 SEER & 10.0 HSPF

Model	Nominal Capacity (Tons)	Voltage-Phase	Dimensions			Service Valve		dBs <sup>1</sup>	Ship Weight (lbs)	ENERGY STAR® Certified <sup>2</sup>
			W"	D"	H"	Liquid	Suction			
AVZC200241A*	2	208/230-1	35½	35½	38¼	¾	¾	58/61/68	240	YES
AVZC200361A*	3	208/230-1	35½	35½	41¼	¾	7/8	56/64/74	305	YES
AVZC200481A*	4	208/230-1	35½	35½	41¼	¾	7/8	56/64/74	305	YES
AVZC200601A*	5	208/230-1	35½	35½	41¼	¾	7/8	56/61/74	365	YES

<sup>1</sup> Minimum/Intermediate/Maximum Sound levels

<sup>2</sup> Proper sizing and installation of equipment is critical to achieve optimal performance. Split system air conditioners and heat pumps must be matched with appropriate coil components to meet **ENERGY STAR**® criteria. Ask your contractor for details or visit [www.energystar.gov](http://www.energystar.gov).

Goodman Manufacturing Company, L.P. reserves the right to discontinue, or change at any time, specifications or designs without notice or without incurring obligations.

### Limited Warranty\*

\* Complete warranty details available from your local dealer or at [www.amana-hac.com](http://www.amana-hac.com). To receive the Lifetime Unit Replacement Limited Warranty (good for as long as you own your home) and 10-Year Parts Limited Warranty, online registration must be completed within 60 days of installation. Online registration is not required in California or Quebec.



The Amana brand AVZC20 Heat Pump contains a variable-speed, high-efficiency compressor, which provides great temperature and humidity control for the consumer who desires superb comfort and quiet operation.



**Most Efficient 2018**  
www.energystar.gov

Products that are recognized as the Most Efficient of **ENERGY STAR**® in 2018 prevent greenhouse gas emissions by meeting rigorous energy efficiency performance levels set by the U.S. Environmental Protection Agency.

### Standard Features

- Variable-speed swing and scroll compressors
- High-density foam compressor sound blanket
- ComfortNet® Communicating Control System compatible
- Amana brand control algorithmic logic
- In communicating mode, only two low-voltage wires to outdoor unit required
- Diagnostic indicator lights, seven-segment LED display, and fault code storage
- Field-selectable boost mode increases compressor speed during unusually high loads
- Quiet ECM outdoor fan motor
- Fully charged for 15' of tubing length
- Field-installed bi-flow filter drier
- Coil and ambient temperature sensors
- Suction pressure transducer
- Sweat connection service valves with easy access to gauge ports
- AHRI Certified; ETL Listed

### Cabinet Features

- Heavy-gauge galvanized-steel cabinet with grille-style sound control top design
- Custom two-tone gray powder-paint finish
- 500-hour salt-spray tested
- Wire fan discharge grille
- Steel louver coil guard
- Top and side maintenance access
- Single-panel access to controls with space provided for field-installed accessories
- When properly anchored, meets the 2010 Florida Building Code unit integrity requirements for hurricane-type winds (Anchor bracket kits available.)

**AVZC18** / Variable-Speed / Inverter-Driven / Up to 19 SEER & 10.0 HSPF

Model	Nominal Capacity (Tons)	Voltage-Phase	Dimensions			Service Valve		dBs <sup>1</sup>	Ship Weight (lbs)
			W"	D"	H"	Liquid	Suction		
<b>AVZC180241A*</b>	2	208/230-1	29	29	38¼	¾	¾	56/58/70	175
<b>AVZC180361A*</b>	3	208/230-1	29	29	38¼	¾	¾	60/61/68	205
<b>AVZC180481A*</b>	4	208/230-1	35½	35½	38¼	¾	¾	63/64/72	220
<b>AVZC180601A*</b>	5	208/230-1	35½	35½	38¼	¾	¾	71/71/77	220

<sup>1</sup> Minimum/Intermediate/Maximum Sound levels

Goodman Manufacturing Company, L.P. reserves the right to discontinue, or change at any time, specifications or designs without notice or without incurring obligations.

**Limited Warranty\***

\* Complete warranty details available from your local dealer or at [www.amana-hac.com](http://www.amana-hac.com). To receive the Lifetime Unit Replacement Limited Warranty (good for as long as you own your home) and 10-Year Parts Limited Warranty, online registration must be completed within 60 days of installation. Online registration is not required in California or Quebec.



The **Amana** brand AVZC18 Heat Pump contains a variable-speed, high-efficiency compressor, which provides great temperature and humidity control for the consumer who desires superb comfort and quiet operation.


**Standard Features**

- Variable-speed swing and scroll compressors
- High-density foam compressor sound blanket
- ComfortNet® Communicating Control System compatible
- Amana brand control algorithmic logic
- In communicating mode, only two low-voltage wires to outdoor unit required
- Diagnostic indicator lights, seven-segment LED display, and fault code storage
- Amana Inside intelligence for diagnostics
- Field-selectable boost mode increases compressor speed during unusually high loads
- Fully charged for 15' of tubing length
- Field-installed bi-flow filter drier
- Coil and ambient temperature sensors
- Suction pressure transducer
- Sweat connection service valves with easy access to gauge ports
- AHRI Certified; ETL Listed

**Cabinet Features**

- Heavy-gauge galvanized-steel cabinet with grille-style sound control top design
- Custom two-tone gray powder-paint finish
- 500-hour salt-spray tested
- Wire fan discharge grille
- Steel louver coil guard
- Top and side maintenance access
- Single-panel access to controls with space provided for field-installed accessories
- When properly anchored, meets the 2010 Florida Building Code unit integrity requirements for hurricane-type winds (Anchor bracket kits available.)



## ASZC18 / Two-Stage / High-Efficiency / Up to 19 SEER & 10 HSPF

Model	Nominal Capacity (Tons)	Voltage-Phase	Dimensions			Service Valve		dBs	Ship Weight (lbs)	ENERGY STAR® Certified <sup>1</sup>
			W"	D"	H"	Liquid"	Suction"			
ASZC180241C*	2	208/230-1	35½	35½	40	¾	7/8	68	250	YES
ASZC180361C*	3	208/230-1	35½	35½	34¾	¾	7/8	72	280	YES
ASZC180481C*	4	208/230-1	35½	35½	40	¾	7/8	73	336	YES
ASZC180601C*	5	208/230-1	35½	35½	40	¾	7/8	75	339	YES

<sup>1</sup> Proper sizing and installation of equipment is critical to achieve optimal performance. Split system air conditioners and heat pumps must be matched with appropriate coil components to meet **ENERGY STAR®** criteria. Ask your contractor for details or visit [www.energystar.gov](http://www.energystar.gov). Refer to Specification Sheet for specific **ENERGY STAR®** certified combinations.

Goodman Manufacturing Company, L.P. reserves the right to discontinue, or change at any time, specifications or designs without notice or without incurring obligations.

### Limited Warranty\*

\* Complete warranty details available from your local dealer or at [www.amana-hac.com](http://www.amana-hac.com). To receive the Lifetime Unit Replacement Limited Warranty (good for as long as you own your home) and 10-Year Parts Limited Warranty, online registration must be completed within 60 days of installation. Online registration is not required in California or Quebec.



The **Amana** brand ASZC18 Heat Pump contains a two-stage, high-efficiency scroll compressor, which provides great temperature and humidity control. This unit is designed for the consumer who desires superb comfort and quiet operation.



### Standard Features

- Two-Stage scroll compressor
- High-density foam compressor sound blanket
- Integrated communicating ComfortBridge™ Technology
- Commissioning and diagnostics via indoor board Bluetooth with the CoolCloud™ phone and tablet application
- Expanded ComfortAlert™ diagnostics built in
- Simple low-voltage wiring to out-door unit in communicating mode
- Diagnostic indicator lights and storage of six fault codes
- Color-coded terminal strip for non-communicating set-up
- SmartShift® technology with short-cycle protection to ensure quiet, reliable defrost
- Factory-installed bi-flow liquid-line filter drier
- Factory-installed transformer
- Factory-installed suction line accumulator
- Factory-installed compressor crankcase heater
- Factory-installed high-capacity muffler
- Factory-installed coil and ambient temperature sensors
- Fully charged for 15' of tubing length
- Quiet ECM condenser fan motor
- AHRI Certified; ETL Listed

### Cabinet Features

- Heavy-gauge galvanized steel enclosure with sound-control top
- Baked-on powder-paint finish
- Wire fan discharge grille
- Steel louver coil guard
- Rust-resistant coated screws
- Compact footprint
- Top and side maintenance access
- Single panel access to controls with space provided for field-installed accessories
- Sweat connection service valves with easy access to gauge ports
- When properly anchored, meets the 2010 Florida Building Code unit integrity requirements for hurricane-type winds (Anchor bracket kits available.)

**ASZC16** / Two-Stage / High-Efficiency / Up to 16 SEER & 9.7 HSPF

Model	Nominal Capacity (Tons)	Voltage-Phase	Dimensions			Service Valve		dBs	Ship Weight (lbs)	ENERGY STAR® Certified <sup>1</sup>
			W"	D"	H"	Liquid"	Suction"			
<b>ASZC160241C*</b>	2	208/230-1	35½	35½	34½	¾	¾	73	240	YES
<b>ASZC160361C*</b>	3	208/230-1	35½	35½	40	¾	7/8	73	266	YES
<b>ASZC160481C*</b>	4	208/230-1	35½	35½	34½	¾	7/8	75	316	YES
<b>ASZC160601C*</b>	5	208/230-1	35½	35½	40	¾	7/8	75	339	YES

<sup>1</sup> Proper sizing and installation of equipment is critical to achieve optimal performance. Split system air conditioners and heat pumps must be matched with appropriate coil components to meet **ENERGY STAR®** criteria. Ask your contractor for details or visit [www.energystar.gov](http://www.energystar.gov). Refer to Specification Sheet for specific **ENERGY STAR®** certified combinations.

Goodman Manufacturing Company, L.P. reserves the right to discontinue, or change at any time, specifications or designs without notice or without incurring obligations.

**Limited Warranty\***

\* Complete warranty details available from your local dealer or at [www.amana-hac.com](http://www.amana-hac.com). To receive the Lifetime Unit Replacement Limited Warranty (good for as long as you own your home) and 10-Year Parts Limited Warranty, online registration must be completed within 60 days of installation. Online registration is not required in California or Quebec.



The **Amana** brand ASZC16 Heat Pump contains a two-stage, high-efficiency scroll compressor, which provides great temperature and humidity control for the consumer who desires superb comfort and quiet operation.


**Standard Features**

- Two-Stage scroll compressor
- High-density foam compressor sound blanket
- Integrated communicating ComfortBridge™ Technology
- Commissioning and diagnostics via indoor board Bluetooth with the CoolCloud™ phone and tablet application
- Expanded ComfortAlert™ diagnostics built in
- Simple low-voltage wiring to out-door unit in communicating mode
- Diagnostic indicator lights and storage of six fault codes
- Color-coded terminal strip for non-communicating set-up
- SmartShift® technology to ensure quiet, reliable defrost
- Factory-installed bi-flow liquid-line filter drier
- Factory-installed transformer
- Factory-installed suction line accumulator
- Factory-installed compressor crankcase heater
- Factory-installed high-capacity muffler
- Factory-installed coil and ambient temperature sensors
- Fully charged for 15' of tubing length
- Sweat connection service valves with easy access to gauge ports
- AHRI Certified; ETL Listed

**Cabinet Features**

- Heavy-gauge galvanized steel enclosure with sound-control top
- Wire fan discharge grille
- Steel louver coil guard
- Baked-on powder paint finish
- Rust-resistant coated screws
- Compact footprint
- Top and side maintenance access
- Single-panel access to controls with space provided for field-installed accessories
- When properly anchored, meets 2010 Florida Building Code unit integrity requirements for hurricane-type winds (Anchor bracket kits available.)

## ASZ16 / High-Efficiency / Up to 16 SEER & 9.5 HSPF

Model	Nominal Capacity (Tons)	Voltage-Phase	Dimensions			Service Valve		dBs	Ship Weight (lbs)	ENERGY STAR® Certified <sup>1</sup>
			W"	D"	H"	Liquid"	Suction"			
ASZ160181L*	1½	208/230-1	29	29	36½	¾	¾	71	189	YES
ASZ160241L*	2	208/230-1	35½	35½	34¾	¾	¾	74	200	YES
ASZ160301L*	2½	208/230-1	35½	35½	34¾	¾	¾	74	206	YES
ASZ160361L*	3	208/230-1	35½	35½	40	¾	7/8	72	240	YES
ASZ160421L*	3½	208/230-1	29	29	36½	¾	7/8	72	237	YES
ASZ160481L*	4	208/230-1	35½	35½	34¾	¾	7/8	73	270	YES
ASZ160601L*	5	208/230-1	35½	35½	40	¾	7/8	75	326	NO

<sup>1</sup> Proper sizing and installation of equipment is critical to achieve optimal performance. Split system air conditioners and heat pumps must be matched with appropriate coil components to meet **ENERGY STAR®** criteria. Ask your contractor for details or visit [www.energystar.gov](http://www.energystar.gov). Refer to Specification Sheet for specific **ENERGY STAR®** certified combinations.

Goodman Manufacturing Company, L.P. reserves the right to discontinue, or change at any time, specifications or designs without notice or without incurring obligations.

### Limited Warranty\*

\* Complete warranty details available from your local dealer or at [www.amana-hac.com](http://www.amana-hac.com). To receive the Lifetime Unit Replacement Limited Warranty (good for as long as you own your home) and 10-Year Parts Limited Warranty, online registration must be completed within 60 days of installation. Online registration is not required in California or Quebec.



The Amana brand ASZ16 High-Efficiency Heat Pump, with its 16 SEER rating, will reduce energy consumption throughout the life of the system compared to lower SEER products.



### Standard Features

- High-efficiency scroll compressor
- Advanced Copeland® CoreSense technology
- High density foam compressor sound blanket
- SmartShift® technology to ensure quiet reliable defrost
- Single-speed ECM condenser fan motor
- Factory-installed bi-flow liquid-line filter drier
- Factory-installed suction line accumulator
- Factory-installed compressor crankcase heater
- Factory-installed high-capacity muffler
- Service valves with sweat connections and easy access to gauge ports
- Copper tube / enhanced aluminum fin coil
- AHRI Certified; ETL Listed

### Cabinet Features

- Heavy-gauge galvanized steel enclosure with sound-control top
- Wire fan discharge grille
- Steel louver coil guard
- Baked-on powder-paint finish
- Top and side maintenance access
- Single-panel access to controls with space provided for field-installed accessories
- When properly anchored, meets the 2010 Florida Building Code unit integrity requirements for hurricane-type winds (Anchor bracket kits available.)



**ASZ14** / Energy-Efficient / Up to 15 SEER & 9.0 HSPF

Model	Nominal Capacity (Tons)	Voltage-Phase	Dimensions			Service Valve		dBs	Ship Weight (lbs)	ENERGY STAR® Certified <sup>1</sup>
			W"	D"	H"	Liquid"	Suction"			
<b>ASZ140181K*</b>	1½	208/230-1	29	29	34½	¾	¾	71	154	YES
<b>ASZ140241K*</b>	2	208/230-1	29	29	34½	¾	¾	71	154	YES
<b>ASZ140301K*</b>	2½	208/230-1	29	29	36½	¾	¾	73	182	YES
<b>ASZ140361K*</b>	3	208/230-1	29	29	36¼	¾	¾	73	184	YES
<b>ASZ140421K*</b>	3½	208/230-1	35½	35½	39¾	¾	7/8	74	207	YES
<b>ASZ140481K*</b>	4	208/230-1	29	29	36¼	¾	7/8	74	237	YES
<b>ASZ140491K*</b>	4	208/230-1	35½	35½	34½	¾	7/8	75	288	NO
<b>ASZ140601K*</b>	5	208/230-1	35½	35½	34½	¾	7/8	75	292	NO

<sup>1</sup> Proper sizing and installation of equipment is critical to achieve optimal performance. Split system air conditioners and heat pumps must be matched with appropriate coil components to meet **ENERGY STAR**® criteria. Ask your contractor for details or visit [www.energystar.gov](http://www.energystar.gov). Refer to Specification Sheet for specific **ENERGY STAR**® certified combinations.

Goodman Manufacturing Company, L.P. reserves the right to discontinue, or change at any time, specifications or designs without notice or without incurring obligations.

**Limited Warranty\***

\* Complete warranty details available from your local dealer or at [www.amana-hac.com](http://www.amana-hac.com). To receive the 10-Year Parts Limited Warranty, online registration must be completed within 60 days of installation. Online registration is not required in California or Quebec.



The **Amana** brand ASZ14 Energy-Efficient Heat Pump, with its ratings up to 15 SEER, will reduce energy consumption throughout the life of the system compared to lower SEER products.


**Standard Features**

- Energy-efficient scroll compressor
- SmartShift® technology with short-cycle protection
- Expanded CoreSense™ diagnostics built in
- Single-speed condenser fan motor
- Factory-installed bi-flow liquid line filter drier
- Factory-installed suction line accumulator
- Factory-installed compressor crankcase heater
- Factory-installed high-capacity muffler
- Copper tube/enhanced aluminum fin coil
- Service valves with sweat connections and easy access to gauge ports
- Fully charged for 15' of tubing length
- AHRI Certified; ETL Listed

**Cabinet Features**

- Heavy-gauge galvanized steel enclosure with sound-control top
- Wire fan discharge grille
- Steel louver coil guard
- Baked-on powder-paint finish
- Rust-resistant screws
- Compact footprint
- Top and side maintenance access
- Single-panel access to controls with space provided for field-installed accessories
- When properly anchored, meets the 2010 Florida Building Code unit integrity requirements for hurricane-type winds (Anchor bracket kits available.)

## ANZ14 / Energy-Efficient / Up to 15 SEER & 8.5 HSPF

Model	Nominal Capacity (Tons)	Voltage-Phase	Dimensions			Service Valve		dBs	Ship Weight (lbs)
			W"	D"	H"	Liquid"	Suction"		
ANZ140181A*	1½	208/230-1	29	29	34½	¾	¾	72	154
ANZ140241A*	2	208/230-1	29	29	34½	¾	¾	72	154
ANZ140301A*	2½	208/230-1	29	29	36½	¾	¾	74	182
ANZ140361A*	3	208/230-1	29	29	36¼	¾	¾	74	184
ANZ140421A*	3½	208/230-1	35½	35½	39¾	¾	7/8	75	207
ANZ140481A*	4	208/230-1	29	29	36¼	¾	7/8	75	237
ANZ140491A*	4	208/230-1	35½	35½	34½	¾	7/8	76	288
ANZ140601A*	5	208/230-1	35½	35½	34½	¾	7/8	76	292

Goodman Manufacturing Company, L.P. reserves the right to discontinue, or change at any time, specifications or designs without notice or without incurring obligations.

### Limited Warranty\*

\* Complete warranty details available from your local dealer or at [www.amana-hac.com](http://www.amana-hac.com). To receive the 10-Year Parts Limited Warranty, online registration must be completed within 60 days of installation. Online registration is not required in California or Quebec.



The Amana brand ANZ14 Energy-Efficient Heat Pump, with its ratings up to 15 SEER, will reduce energy consumption throughout the life of the system compared to lower SEER products.



### Standard Features

- High-efficiency compressor
- Time-delay technology to ensure quiet reliable defrost
- Single-speed condenser fan motor
- Factory-installed bi-flow liquid line filter drier
- Factory-installed suction line accumulator
- Factory-installed compressor crankcase heater
- Factory-installed high-capacity muffler
- High- and low-pressure switches
- Copper tube/enhanced aluminum fin coil
- Service valves with sweat connections and easy access to gauge ports
- AHRI Certified; ETL Listed

### Cabinet Features

- Heavy-gauge galvanized steel cabinet with louvered sound control top
- Custom Nickel Gray powder-paint finish
- 500-hour salt-spray tested
- Steel louver coil guard
- Rust-resistant screws
- Top and side maintenance access
- Single-panel access to controls with space provided for field-installed accessories
- When properly anchored, meets the 2010 Florida Building Code unit integrity requirements for hurricane-type winds (Anchor bracket kits available.)

# GAS FURNACES





## AMVM97 / Modulating / Variable-Speed ECM / Up to 98% AFUE

Model	High-Fire Rate (BTU/h)		Low-Fire Rate (BTU/h)		AFUE %	Tons A/C <sup>1</sup>	Dimensions			Ship Weight (lbs)	ENERGY STAR® Certified
	Input	Output	Input	Output			W"	D"	H"		
AMVM970603BNA	60,000	58,800	30,000	29,400	98	3	17½	28⅞	34½	118	YES
AMVM970803BNA	80,000	77,600	40,000	38,800	97	3	17½	28⅞	34½	121	YES
AMVM970804CNA	80,000	78,400	40,000	39,200	98	4	21	28⅞	34½	142	YES
AMVM971005CNA	100,000	97,000	50,000	48,500	97	5	21	28⅞	34½	144	YES
AMVM971205DNA	120,000	116,400	60,000	58,200	97	5	24½	28⅞	34½	157	YES

<sup>1</sup> @ 0.1"–0.8" ESP

Goodman Manufacturing Company, L.P. reserves the right to discontinue, or change at any time, specifications or designs without notice or without incurring obligations.

### Limited Warranty\*

\* Complete warranty details available from your local dealer or at [www.amana-hac.com](http://www.amana-hac.com). To receive the Lifetime Unit Replacement Limited Warranty (good for as long as you own your home) and 10-Year Parts Limited Warranty, online registration must be completed within 60 days of installation. Online registration is not required in California or Quebec.



Amana brand AMVM97 Modulating Variable-Speed Gas Furnace provides exceptional indoor comfort and features a stainless-steel tubular heat exchanger and durable silicon nitride ignition system. This quiet furnace delivers a money-saving efficiency of up to 98% AFUE compared to lower AFUE furnaces.



### Standard Features

- ComfortNet® Communicating Control System compatible
- Heavy-duty stainless-steel tubular heat exchanger
- Stainless-steel secondary heat exchanger
- Self-calibrating modulating gas valve auto-configure for each installation
- Durable Silicon Nitride igniter
- Quiet two-speed induced draft blower
- Utilizes ComfortNet® communicating, two-stage or single-stage thermostats
- Self-diagnostic control board with constant memory fault code history output to a dual 7-segment display
- Color-coded low-voltage terminals with provisions for electronic air cleaner and humidifier
- Efficient and quiet variable-speed airflow system gently ramps up or down according to heating or cooling demand
- Multiple continuous fan speed options offer quiet air circulation
- Auto-Comfort and enhanced dehumidification modes available
- All models comply with California 40 ng/J Low NO<sub>x</sub> emissions standard

### Cabinet Features

- Designed for multi-position installation: upflow, horizontal left or right
- Certified for direct vent (2-pipe) or non-direct vent (1-pipe)
- Easy-to-install top venting with optional side venting
- Convenient left or right connection for gas and electrical service
- Cabinet air leakage ≤ 2%
- Heavy-gauge steel cabinet with durable finish
- Fully insulated heat exchanger and blower section
- Airtight solid bottom or side return with easy-cut tabs for effortless removal in bottom air-inlet applications

## ACVM97 / Modulating / Variable-Speed ECM / Up to 97% AFUE

Model	High-Fire Rate <sup>1</sup>		Low-Fire Rate <sup>1</sup>		AFUE %	Tons A/C <sup>2</sup>	Dimensions			Ship Weight (lbs)	ENERGY STAR® Certified
	Input	Output	Input	Output			W"	D"	H"		
ACVM970603BNA	60,000	58,200	30,000	29,100	97	3	17½	28⅞	34½	117	YES
ACVM970803BNA	80,000	77,600	40,000	38,800	97	3	17½	28⅞	34½	122	YES
ACVM970804CNA	80,000	77,600	40,000	38,800	97	4	21	28⅞	34½	144	YES
ACVM971005CNA	100,000	97,000	50,000	48,500	97	5	21	28⅞	34½	146	YES

<sup>1</sup> BTU/H <sup>2</sup> @ 0.1"–0.8" ESP

Goodman Manufacturing Company, L.P. reserves the right to discontinue, or change at any time, specifications or designs without notice or without incurring obligations.

**Limited Warranty\***

\* Complete warranty details available from your local dealer or at [www.amana-hac.com](http://www.amana-hac.com). To receive the Lifetime Unit Replacement Limited Warranty (good for as long as you own your home) and 10-Year Parts Limited Warranty, online registration must be completed within 60 days of installation. Online registration is not required in California or Quebec.



Amana brand ACVM97 Modulating Variable-Speed Gas Furnace provides exceptional indoor comfort and features a stainless-steel tubular heat exchanger and durable silicon nitride ignition system. This quiet furnace delivers a money-saving efficiency of up to 97% AFUE compared to lower AFUE furnaces.

**Standard Features**

- ComfortNet® Communicating Control System compatible
- Heavy-duty stainless-steel tubular heat exchanger
- Stainless-steel secondary heat exchanger
- Self-calibrating modulating gas valve auto-configure for each installation
- Durable Silicon Nitride igniter
- Quiet two-speed induced draft blower
- Utilizes ComfortNet® communicating, two-stage or single-stage thermostats
- Self-diagnostic control board with constant memory fault code history output to a dual 7-segment display
- Color-coded low-voltage terminals with provisions for electronic air cleaner and humidifier
- Efficient and quiet variable-speed airflow system gently ramps up or down according to heating or cooling demand
- Multiple continuous fan speed options offer quiet air circulation
- Auto-Comfort and enhanced dehumidification modes available
- All models comply with California 40 ng/J Low NO<sub>x</sub> emissions standard

**Cabinet Features**

- Designed for multi-position installation: downflow, horizontal left or right
- Certified for direct vent (2-pipe) or non-direct vent (1-pipe)
- Easy-to-install top venting with optional side venting
- Convenient left or right connection for gas and electrical service
- Cabinet air leakage ≤ 2%
- Heavy-gauge steel cabinet with durable finish
- Fully insulated heat exchanger and blower section
- Airtight solid bottom or side return with easy-cut tabs for effortless removal in bottom air-inlet applications

## AMVC96 (B) / Two-Stage / Variable-Speed ECM / Up to 96% AFUE

Model	High-Fire Rate <sup>1</sup>		Low-Fire Rate <sup>1</sup>		AFUE %	Tons A/C <sup>2</sup>	Dimensions			Ship Weight (lbs)	ENERGY STAR® Certified
	Input	Output	Input	Output			W"	D"	H"		
AMVC960403BNB	40,000	38,400	28,000	26,880	96	3	17½	28¾	34½	114	YES
AMVC960603BNB	60,000	57,600	42,000	40,320	96	3	17½	28¾	34½	117	YES
AMVC960803BNB	80,000	76,800	56,000	53,760	96	3	17½	28¾	34½	120	YES
AMVC960804CNB	80,000	76,800	56,000	53,760	96	4	21	28¾	34½	141	YES
AMVC961005CNB	100,000	96,000	70,000	67,200	96	5	21	28¾	34½	143	YES
AMVC961005DNB	100,000	96,000	70,000	67,200	96	5	24½	28¾	34½	153	YES
AMVC961205DNB	120,000	115,200	84,000	80,640	96	5	24½	28¾	34½	156	YES

<sup>1</sup> BTU/H <sup>2</sup> @ 0.1"-0.8" ESP

Goodman Manufacturing Company, L.P. reserves the right to discontinue, or change at any time, specifications or designs without notice or without incurring obligations.

### Limited Warranty\*

\* Complete warranty details available from your local dealer or at [www.amana-hac.com](http://www.amana-hac.com). To receive the Lifetime Unit Replacement Limited Warranty (good for as long as you own your home) and 10-Year Parts Limited Warranty, online registration must be completed within 60 days of installation. Online registration is not required in California or Quebec.



Amana brand AMVC96 Two-Stage, Variable-Speed Gas Furnace provides exceptional indoor comfort and features a stainless-steel tubular heat exchanger and durable silicon nitride ignition system. This quiet furnace delivers a money-saving efficiency of up to 96% AFUE compared to lower AFUE furnaces.



### Standard Features

- Integrated communicating ComfortBridge™ Technology
- Commissioning and diagnostics via on board Bluetooth with the CoolCloud phone and tablet application
- Heavy-duty stainless-steel tubular heat exchanger
- Stainless-steel secondary heat exchanger
- Two-stage gas valve provides quiet, economical heating
- Durable Silicon Nitride igniter
- Quiet two-speed induced draft blower
- Compatible with any single-stage thermostat
- Self-diagnostic control board with constant memory fault code history output to a triple 7-segment display
- Color-coded low-voltage terminals with provisions for electronic air cleaner
- Efficient and quiet variable-speed airflow system gently ramps up or down according to heating or cooling demand
- Multiple continuous fan speed options offer quiet air circulation
- Auto-Comfort and enhanced dehumidification modes available
- All models comply with California 40 ng/J Low NOx emissions standard

### Cabinet Features

- Designed for multi-position installation: upflow, horizontal left or right
- Certified for direct vent (2-pipe) or non-direct vent (1-pipe)
- Easy-to-install top venting with optional side venting
- Convenient left or right connection for gas and electrical service
- Cabinet air leakage (QLeak) ≤ 2%
- Heavy-gauge steel cabinet with durable finish
- Fully insulated heat exchanger and blower section
- Airtight solid bottom or side return with easy-cut tabs for effortless removal in bottom air-inlet applications

## ACVC96 (B) / Two-Stage / Variable-Speed ECM / Up to 96% AFUE

Model	High-Fire Rate <sup>1</sup>		Low-Fire Rate <sup>1</sup>		AFUE %	Tons A/C <sup>2</sup>	Dimensions			Ship Weight (lbs)	ENERGY STAR® Certified
	Input	Output	Input	Output			W"	D"	H"		
ACVC960403BNB	40,000	38,400	28,000	26,880	96	3	17½	28¾	34½	116	YES
ACVC960603BNB	60,000	57,600	42,000	40,320	96	3	17½	28¾	34½	119	YES
ACVC960804CNC	80,000	76,800	56,000	53,760	96	4	21	28¾	34½	143	YES
ACVC961005CNC	100,000	96,000	70,000	67,200	96	5	21	28¾	34½	145	YES
ACVC961205DNC	120,000	115,200	84,000	80,640	96	5	24½	28¾	34½	158	YES

<sup>1</sup> BTU/H <sup>2</sup> @ 0.1"–0.8" ESP

Goodman Manufacturing Company, L.P. reserves the right to discontinue, or change at any time, specifications or designs without notice or without incurring obligations.

### Limited Warranty\*

\* Complete warranty details available from your local dealer or at [www.amana-hac.com](http://www.amana-hac.com). To receive the Lifetime Unit Replacement Limited Warranty (good for as long as you own your home) and 10-Year Parts Limited Warranty, online registration must be completed within 60 days of installation. Online registration is not required in California or Quebec.



Amana brand ACVC96 Two-Stage, Variable-Speed Gas Furnace provides exceptional indoor comfort and features a stainless-steel tubular heat exchanger and durable silicon nitride ignition system. This quiet furnace delivers a money-saving efficiency of up to 96% AFUE compared to lower AFUE furnaces.



### Product Features

- Integrated communicating ComfortBridge™ Technology
- Commissioning and diagnostics via on board Bluetooth with the CoolCloud phone and tablet application
- Heavy-duty stainless-steel tubular heat exchanger
- Stainless-steel secondary heat exchanger
- Two-stage gas valve provides quiet, economical heating
- Durable Silicon Nitride igniter
- Quiet two-speed induced draft blower
- Compatible with any single-stage thermostat
- Self-diagnostic control board with constant memory fault code history output to a triple 7-segment display
- Color-coded low-voltage terminals with provisions for electronic air cleaner
- Efficient and quiet variable-speed airflow system gently ramps up or down according to heating or cooling demand
- Multiple continuous fan speed options offer quiet air circulation
- Auto-Comfort and enhanced dehumidification modes available
- All models comply with California 40 ng/J Low NOx emissions standards
- AHRI Certified; ETL Listed

### Cabinet Features

- Designed for multi-position installation —downflow, horizontal left or right
- Certified for direct vent (2-pipe) or non-direct vent (1-pipe)
- Convenient left or right connection for gas and electrical service
- Cabinet air leakage ≤ 2%
- Heavy-gauge steel cabinet with durable finish
- Fully insulated heat exchanger and blower section
- Airtight solid bottom or side return with easy cut tabs for effortless removal in bottom air-inlet applications



## AMSS96/ACSS96 / Single-Stage / Multi-Speed / Up to 96% AFUE

Model	High-Fire Rate (BTU/h)		AFUE %	Tons A/C <sup>1</sup>	Dimensions			Ship Weight (lbs)
	Input	Output			W"	D"	H"	
AMSS960403ANA	40,000	38,400	96	3	14	28 <sup>3</sup> / <sub>8</sub>	34 <sup>1</sup> / <sub>2</sub>	105
AMSS960402BNA	40,000	38,400	96	2	17 <sup>1</sup> / <sub>2</sub>	28 <sup>3</sup> / <sub>4</sub>	34 <sup>1</sup> / <sub>2</sub>	111
AMSS960603BNA	60,000	57,600	96	3	17 <sup>1</sup> / <sub>2</sub>	28 <sup>3</sup> / <sub>4</sub>	34 <sup>1</sup> / <sub>2</sub>	114
AMSS960803BNA	80,000	76,800	96	3	17 <sup>1</sup> / <sub>2</sub>	28 <sup>3</sup> / <sub>4</sub>	34 <sup>1</sup> / <sub>2</sub>	116
AMSS960804CNA	80,000	76,800	96	4	21	28 <sup>3</sup> / <sub>4</sub>	34 <sup>1</sup> / <sub>2</sub>	139
AMSS960805CNA	80,000	76,800	96	5	21	28 <sup>3</sup> / <sub>4</sub>	34 <sup>1</sup> / <sub>2</sub>	140
AMSS961005CNA	100,000	96,000	96	5	21	28 <sup>3</sup> / <sub>4</sub>	34 <sup>1</sup> / <sub>2</sub>	142
AMSS961205DNA	120,000	115,200	96	5	24 <sup>1</sup> / <sub>2</sub>	28 <sup>3</sup> / <sub>4</sub>	34 <sup>1</sup> / <sub>2</sub>	154
ACSS960402BNA	40,000	38,400	96	2	17 <sup>1</sup> / <sub>2</sub>	28 <sup>3</sup> / <sub>4</sub>	34 <sup>1</sup> / <sub>2</sub>	111
ACSS960603BNA	60,000	57,600	96	3	17 <sup>1</sup> / <sub>2</sub>	28 <sup>3</sup> / <sub>4</sub>	34 <sup>1</sup> / <sub>2</sub>	114
ACSS960804CNA	80,000	76,800	96	4	21"	28 <sup>3</sup> / <sub>4</sub>	34 <sup>1</sup> / <sub>2</sub>	139
ACSS961005CNA	100,000	95,000	95	5	21"	28 <sup>3</sup> / <sub>4</sub>	34 <sup>1</sup> / <sub>2</sub>	142
ACSS961205DNA	120,000	114,000	95	5	24 <sup>1</sup> / <sub>2</sub>	28 <sup>3</sup> / <sub>4</sub>	34 <sup>1</sup> / <sub>2</sub>	154

<sup>1</sup> Max tons @ 0.5" ESP

Goodman Manufacturing Company, L.P. reserves the right to discontinue, or change at any time, specifications or designs without notice or without incurring obligations.

### Limited Warranty\*

\* Complete warranty details available from your local dealer or at [www.amana-hac.com](http://www.amana-hac.com). To receive the Lifetime Unit Replacement Limited Warranty (good for as long as you own your home) and 10-Year Parts Limited Warranty, online registration must be completed within 60 days of installation. Online registration is not required in California or Quebec.



Amana brand AMSS96/ACSS96 Single-Stage, Multi-Speed Gas Furnaces provide exceptional indoor comfort and feature a stainless-steel tubular heat exchanger and durable silicon nitride ignition system. This quiet furnace delivers a money-saving efficiency of up to 96% AFUE compared to lower AFUE furnaces.



### Standard Features

- Heavy-duty stainless-steel tubular heat exchanger
- Stainless-steel secondary heat exchanger
- Single-stage gas valve
- Durable Silicon Nitride igniter
- Quiet single-speed induced draft blower
- Self-diagnostic control board with constant memory fault code history output to a LED
- Color-coded low-voltage terminals with provisions for electronic air cleaner and humidifier
- All models comply with California 40 ng/J Low NO<sub>x</sub> emissions standard

### Cabinet Features

- Designed for multi-position installation  
AMSS96: upflow, horizontal left or right  
ACSS96: downflow, horizontal left or right
- Certified for direct vent (2-pipe) or non-direct vent (1-pipe)
- Easy-to-install top venting with optional side venting — AMSS96/upflow models only
- Convenient left or right connection for gas and electrical service
- Cabinet air leakage ≤ 2%
- Heavy-gauge steel cabinet with durable finish
- Fully insulated heat exchanger and blower section
- Airtight solid bottom or side return with easy-cut tabs for effortless removal in bottom air-inlet application



## AMEC96 / Two-Stage / Multi-Speed ECM / Up to 96% AFUE

Model	High-Fire Rate <sup>1</sup>		Low-Fire Rate <sup>1</sup>		AFUE %	Tons A/C <sup>2</sup>	Dimensions			Ship Weight (lbs)	ENERGY STAR <sup>®</sup> Certified
	Input	Output	Input	Output			W"	D"	H"		
AMEC960303ANA	30,000	28,800	21,000	20,160	96	3	14"	28 <sup>7</sup> / <sub>8</sub>	34 <sup>1</sup> / <sub>2</sub>	106	YES
AMEC960403ANA	40,000	38,400	28,000	26,880	96	3	14"	28 <sup>7</sup> / <sub>8</sub>	34 <sup>1</sup> / <sub>2</sub>	106	YES
AMEC960603ANA	60,000	57,600	42,000	40,320	96	3	14"	28 <sup>7</sup> / <sub>8</sub>	34 <sup>1</sup> / <sub>2</sub>	110	YES
AMEC960302BNA	30,000	28,800	21,000	20,160	96	1.5–2.0	17 <sup>1</sup> / <sub>2</sub>	28 <sup>3</sup> / <sub>4</sub>	34 <sup>1</sup> / <sub>2</sub>	111	YES
AMEC960402BNA	40,000	38,400	28,000	26,880	96	1.5–3.0	17 <sup>1</sup> / <sub>2</sub>	28 <sup>3</sup> / <sub>4</sub>	34 <sup>1</sup> / <sub>2</sub>	112	YES
AMEC960603BNA	60,000	57,600	42,000	40,320	96	1.5–3.0	17 <sup>1</sup> / <sub>2</sub>	28 <sup>3</sup> / <sub>4</sub>	34 <sup>1</sup> / <sub>2</sub>	115	YES
AMEC960803BNA	80,000	76,800	56,000	53,760	96	1.5–3.0	17 <sup>1</sup> / <sub>2</sub>	28 <sup>3</sup> / <sub>4</sub>	34 <sup>1</sup> / <sub>2</sub>	118	YES
AMEC960804CNA	80,000	76,800	56,000	53,760	96	2.5–4.0	17 <sup>1</sup> / <sub>2</sub>	28 <sup>3</sup> / <sub>4</sub>	34 <sup>1</sup> / <sub>2</sub>	123	YES
AMEC961004CNA	100,000	96,000	70,000	67,200	96	1.5–4.0	21	28 <sup>3</sup> / <sub>4</sub>	34 <sup>1</sup> / <sub>2</sub>	140	YES
AMEC961205CNA	100,000	96,000	70,000	67,200	96	3.0–5.0	21	28 <sup>3</sup> / <sub>4</sub>	34 <sup>1</sup> / <sub>2</sub>	140	YES
AMEC961205DNA	120,000	115,200	84,000	80,640	96	3.0–5.0	24 <sup>1</sup> / <sub>2</sub>	28 <sup>3</sup> / <sub>4</sub>	34 <sup>1</sup> / <sub>2</sub>	154	YES

<sup>1</sup> BTU/H <sup>2</sup> @ 0.1"–0.8" ESP

Goodman Manufacturing Company, L.P. reserves the right to discontinue, or change at any time, specifications or designs without notice or without incurring obligations.

**Limited Warranty\***

\* Complete warranty details available from your local dealer or at [www.amana-hac.com](http://www.amana-hac.com). To receive the Lifetime Unit Replacement Limited Warranty (good for as long as you own your home) and 10-Year Parts Limited Warranty, online registration must be completed within 60 days of installation. Online registration is not required in California or Quebec.



Amana brand AMEC96 Two-Stage, Multi-Speed ECM Gas Furnace provides exceptional indoor comfort and features a stainless-steel tubular heat exchanger and durable silicon nitride ignition system. This quiet furnace delivers a money-saving efficiency of up to 96% AFUE compared to lower AFUE furnaces.

**Standard Features**

- Energy-efficient multi-speed ECM blower motor
- Heavy-duty stainless-steel tubular heat exchanger
- Stainless-steel secondary heat exchanger
- Two-stage gas valve provides quiet, economical heating
- Durable Silicon Nitride igniter
- Quiet two-speed induced draft blower
- Self-diagnostic control board with constant memory fault code history output to a LED
- Color-coded low-voltage terminals with provisions for electronic air cleaner and humidifier
- Low continuous fan speed options offer quiet air circulation
- All models comply with California 40 ng/J Low NO<sub>x</sub> emissions standard

**Cabinet Features**

- Designed for multi-position installation: upflow, horizontal left or right
- Certified for direct vent (2-pipe) or non-direct vent (1-pipe)
- Easy-to-install top venting with optional side venting
- Convenient left or right connection for gas and electrical service
- Cabinet air leakage ≤ 2%
- Heavy-gauge steel cabinet with durable finish
- Fully insulated heat exchanger and blower section
- Airtight solid bottom or side return with easy-cut tabs for effortless removal in bottom air-inlet applications

## ACEC96 / Two-Stage / Multi-Speed ECM / Up to 96% AFUE

Model	High-Fire Rate <sup>1</sup>		Low-Fire Rate <sup>1</sup>		AFUE %	Tons A/C <sup>2</sup>	Dimensions			Ship Weight (lbs)	ENERGY STAR <sup>®</sup> Certified
	Input	Output	Input	Output			W"	D"	H"		
ACEC960403BNA	40,000	38,400	28,000	26,880	96	3	17½	28¾	34½	112	YES
ACEC960603BNA	60,000	57,600	42,000	40,320	96	3	17½	28¾	34½	115	YES
ACEC960803BNA	80,000	76,800	56,000	53,760	96	3	17½	28¾	34½	118	YES
ACEC961005CNA	100,000	96,000	70,000	67,200	96	5	21	28¾	34½	140	YES

<sup>1</sup> BTU/H <sup>2</sup> @ 0.1"–0.8" ESP

Goodman Manufacturing Company, L.P. reserves the right to discontinue, or change at any time, specifications or designs without notice or without incurring obligations.

### Limited Warranty\*

\* Complete warranty details available from your local dealer or at [www.amana-hac.com](http://www.amana-hac.com). To receive the Lifetime Unit Replacement Limited Warranty (good for as long as you own your home) and 10-Year Parts Limited Warranty, online registration must be completed within 60 days of installation. Online registration is not required in California or Quebec.



Amana brand ACEC96 Two-Stage, Multi-Speed ECM Gas Furnace provides exceptional indoor comfort and features a stainless-steel tubular heat exchanger and durable silicon nitride ignition system. This quiet furnace delivers a money-saving efficiency of up to 96% AFUE compared to lower AFUE furnaces.



### Standard Features

- Energy-efficient multi-speed ECM blower motor
- Heavy-duty stainless-steel tubular heat exchanger
- Stainless-steel secondary heat exchanger
- Two-stage gas valve provides quiet, economical heating
- Durable Silicon Nitride igniter
- Quiet two-speed induced draft blower
- Self-diagnostic control board with constant memory fault code history output to a LED
- Color-coded low-voltage terminals with provisions for electronic air cleaner and humidifier
- Low continuous fan speed options offer quiet air circulation
- All models comply with California 40 ng/J Low NO<sub>x</sub> emissions standard

### Cabinet Features

- Designed for multi-position installation: down flow, horizontal left or right
- Certified for direct vent (2-pipe) or non-direct vent (1-pipe)
- Easy-to-install top venting with optional side venting
- Convenient left or right connection for gas and electrical service
- Cabinet air leakage ≤ 2%
- Heavy-gauge steel cabinet with durable finish
- Fully insulated heat exchanger and blower section
- Airtight solid bottom or side return with easy-cut tabs for effortless removal in bottom air-inlet applications

## AMSS92/ACSS92 / Single-Stage / Multi-Speed / Up to 92% AFUE

Model	High-Fire Rate (BTU/h)		AFUE %	Tons A/C <sup>1</sup>	Dimensions			Ship Weight (lbs)
	Input	Output			W"	D"	H"	
AMSS920403ANA	40,000	36,800	92	3	14	28 <sup>3</sup> / <sub>8</sub>	34 <sup>1</sup> / <sub>2</sub>	104
AMSS920402BNA	40,000	36,800	92	2	17 <sup>1</sup> / <sub>2</sub>	28 <sup>3</sup> / <sub>4</sub>	34 <sup>1</sup> / <sub>2</sub>	109
AMSS920603BNA	60,000	55,200	92	3	17 <sup>1</sup> / <sub>2</sub>	28 <sup>3</sup> / <sub>4</sub>	34 <sup>1</sup> / <sub>2</sub>	112
AMSS920803BNA	80,000	73,600	92	3	17 <sup>1</sup> / <sub>2</sub>	28 <sup>3</sup> / <sub>4</sub>	34 <sup>1</sup> / <sub>2</sub>	115
AMSS920804CNA	80,000	73,600	92	4	21	28 <sup>3</sup> / <sub>4</sub>	34 <sup>1</sup> / <sub>2</sub>	137
AMSS920805CNA	80,000	73,600	92	5	21	28 <sup>3</sup> / <sub>4</sub>	34 <sup>1</sup> / <sub>2</sub>	138
AMSS921004CNA	100,000	92,000	92	4	21	28 <sup>3</sup> / <sub>4</sub>	34 <sup>1</sup> / <sub>2</sub>	139
AMSS921005CNA	100,000	92,000	92	5	21	28 <sup>3</sup> / <sub>4</sub>	34 <sup>1</sup> / <sub>2</sub>	140
AMSS921205BNA	120,000	110,400	92	5	24 <sup>1</sup> / <sub>2</sub>	28 <sup>3</sup> / <sub>4</sub>	34 <sup>1</sup> / <sub>2</sub>	152
ACSS920402BNA	40,000	36,800	92	2	17 <sup>1</sup> / <sub>2</sub>	28 <sup>3</sup> / <sub>4</sub>	34 <sup>1</sup> / <sub>2</sub>	109
ACSS920603BNA	60,000	55,200	92	3	17 <sup>1</sup> / <sub>2</sub>	28 <sup>3</sup> / <sub>4</sub>	34 <sup>1</sup> / <sub>2</sub>	112
ACSS920804CNA	80,000	73,600	92	4	21	28 <sup>3</sup> / <sub>4</sub>	34 <sup>1</sup> / <sub>2</sub>	137
ACSS921005CNA	100,000	92,000	92	5	21	28 <sup>3</sup> / <sub>4</sub>	34 <sup>1</sup> / <sub>2</sub>	140

<sup>1</sup> Max tons @ 0.5" ESP

Goodman Manufacturing Company, L.P. reserves the right to discontinue, or change at any time, specifications or designs without notice or without incurring obligations.

### Limited Warranty\*

\* Complete warranty details available from your local dealer or at [www.amana-hac.com](http://www.amana-hac.com). To receive the Lifetime Heat Exchanger Limited Warranty (good for as long as you own your home) and the 10-Year Parts Limited Warranty, online registration must be completed within 60 days of installation. Online registration is not required in California or Quebec.



Amana brand AMSS92/ACSS92 Single-Stage, Multi-Speed Gas Furnaces provide exceptional indoor comfort and feature a stainless-steel tubular heat exchanger and durable silicon nitride ignition system. This quiet furnace delivers a money-saving efficiency of up to 92% AFUE compared to lower AFUE furnaces.



### Standard Features

- Heavy-duty stainless-steel tubular heat exchanger
- Stainless-steel secondary heat exchanger
- Single-stage gas valve
- Durable Silicon Nitride igniter
- Multi-speed blower motor
- Quiet single-speed induced draft blower
- Self-diagnostic control board
- Color-coded low-voltage terminals
- All models comply with California 40 ng/J Low NO<sub>x</sub> emissions standard

### Cabinet Features

- Designed for multi-position installation:  
AMSS92: upflow, horizontal left or right  
ACSS92: downflow, horizontal left or right
- Certified for direct vent (2-pipe) or non-direct vent (1-pipe)
- Easy-to-install top venting with optional side venting — AMSS92/upflow models only
- Convenient left or right connection for gas and electrical service
- Cabinet air leakage ≤ 2%
- Heavy-gauge steel cabinet with durable finish
- Foil-faced insulated heat exchanger cabinet
- Airtight solid bottom or side return with easy-cut tabs for effortless removal in bottom air-inlet applications

## AMVC8/ACVC8 / Two-Stage / Variable-Speed / 80% AFUE

Model	High-Fire Rate (BTU/h)		Low-Fire Rate (BTU/h)		AFUE %	Tons A/C <sup>1</sup>	Dimensions			Ship Weight (lbs)
	Input	Output	Input	Output			W"	D"	H"	
AMVC80603B*B	60,000	48,000	42,000	33,600	80	1½-3	17½	28	33¾	105
AMVC80604B*B	60,000	48,000	42,000	33,600	80	1½-4	17½	28	33¾	107
AMVC80803B*B	80,000	64,000	56,000	44,800	80	1½-3	17½	28	33¾	110
AMVC80804C*B	80,000	64,000	56,000	44,800	80	3-4	21	28	33¾	118
AMVC80805C*B	80,000	64,000	56,000	44,800	80	2-5	21	28	33¾	121
AMVC80805D*B	80,000	64,000	56,000	44,800	80	2½-5	24½	28	33¾	129
AMVC81005C*B	100,000	80,000	70,000	56,000	80	2-5	21	28	33¾	124
ACVC80603B*B	60,000	48,000	42,000	33,600	80	1½-3	17½	28	33¾	105
ACVC80803B*B	80,000	64,000	56,000	44,800	80	1½-3	17½	28	33¾	109
ACVC80805C*B	80,000	64,000	56,000	44,800	80	2-5	21	28	33¾	125
ACVC81005C*B	100,000	80,000	70,000	56,000	80	2-5	21	28	33¾	129

<sup>1</sup> BTU/H <sup>2</sup> @ 0.1"-0.8" ESP

Goodman Manufacturing Company, L.P. reserves the right to discontinue, or change at any time, specifications or designs without notice or without incurring obligations.

### Limited Warranty\*

\* Complete warranty details available from your local dealer or at [www.amana-hac.com](http://www.amana-hac.com). To receive the Lifetime Unit Replacement Limited Warranty (good for as long as you own your home) and 10-Year Parts Limited Warranty, online registration must be completed within 60 days of installation. Online registration is not required in California or Quebec.



Amana brand AMVC8/ACVC8 Two-Stage, Variable-Speed Multi-Position Gas Furnaces provide exceptional indoor comfort, quiet operation, and feature a stainless-steel tubular heat exchanger and durable silicon nitride ignition system. With their two-stage gas valves and variable-speed circulator blowers, these furnaces provide comfort all season long.



### Standard Features

- Two-stage gas valve operates on two-stage or single-stage thermostats
- ComfortNet® Communicating Control System compatible
- Efficient and quiet variable-speed ECM circulator motor gently ramps up or down according to heating or cooling demand
- SureStart™ Silicon Nitride igniter designed for long igniter life
- Furnace control board with self-diagnostics and provisions for electronic air cleaner and 120-volt or 24-volt humidifiers
- Low constant fan speed circulates air throughout the home
- Quiet, two-speed induced draft blower
- California Low NO<sub>x</sub> emissions-compliant models available
- AHRI Certified; ETL Listed

### Cabinet Features

- Fully insulated, heavy-gauge steel cabinet with durable baked-enamel finish
- Multi-position installation: AMVC8: upflow, horizontal left or right; ACVC8: downflow, horizontal left or right
- Removable bottom for side-or bottom-return applications
- Convenient left or right connection for gas/electric service
- Cabinet air leakage ≤ 2%
- Coil and furnace fit flush for most installations

## AMEH8 / Two-Stage Convertible / Multi-Speed ECM / 80% AFUE

Model	Heating Fire Rate (BTU/h)		AFUE %	Tons A/C <sup>1</sup>	Dimensions			Ship Weight (lbs)
	Input	Output			W"	D"	H"	
AMEH800603B*A*	60,000	48,000	80	3	17½	28	33¾	98
AMEH800805C*A*	80,000	64,000	80	5	21	28	33¾	116
AMEH800805D*A*	80,000	64,000	80	5	24½	28	33¾	123
AMEH801005C*A*	100,000	80,000	80	5	21	28	33¾	120

<sup>1</sup> Max tons @ 0.5" ESP

Goodman Manufacturing Company, L.P. reserves the right to discontinue, or change at any time, specifications or designs without notice or without incurring obligations.

### Limited Warranty\*

\* Complete warranty details available from your local dealer or at [www.amana-hac.com](http://www.amana-hac.com). To receive the Lifetime Unit Replacement Limited Warranty (good for as long as you own your home) and 10-Year Parts Limited Warranty, online registration must be completed within 60 days of installation. Online registration is not required in California or Quebec.



Amana brand AMEH8 Two-stage Convertible, Multi-speed ECM Gas Furnace features a stainless-steel tubular heat exchanger and durable silicon nitride ignition system. With a heavy-gauge reinforced, insulated steel cabinet and durable baked enamel finish, this unit can be installed in a variety of locations.



### Standard Features

- Energy-efficient multi-speed ECM blower motor
- Two-stage convertible gas valve automatically adjusts to high or low stage
- Durable SureStart™ Silicon Nitride igniter
- Quiet single-speed draft inducer
- Self-diagnostic control board with constant memory fault code
- Color-coded low-voltage terminals with provisions for electronic air cleaner and humidifier
- Low continuous fan speed options offer quiet air circulation
- California Low NO<sub>x</sub> emissions standards models available

### Cabinet Features

- Multi-position installation: upflow, horizontal left or right
- Convenient left or right connection for gas and electrical service
- Cabinet air leakage ≤ 2%
- Heavy-gauge steel cabinet with durable baked-enamel finish
- Fully insulated heat exchanger and blower section

## AMH8 / Two-Stage Convertible / Multi-Speed / 80% AFUE

Model	Heating Fire Rate (BTU/h)		AFUE %	Tons A/C <sup>1</sup>	Dimensions			Ship Weight (lbs)
	Input	Output			W"	D"	H"	
AMH80403A*B*	40,000	32,000	80	3	14	28	33⅝	86
AMH80603A*B*	60,000	48,000	80	3	14	28	33⅝	90
AMH80604B*B*	60,000	48,000	80	4	17½	28	33⅝	98
AMH80803B*B*	80,000	64,000	80	3	17½	28	33⅝	106
AMH80804B*B*	80,000	64,000	80	4	17½	28	33⅝	107
AMH80805C*B*	80,000	64,000	80	5	21	28	33⅝	114
AMH81005C*B*	100,000	80,000	80	5	21	28	33⅝	118
AMH81205D*B*	120,000	96,000	80	5	24½	28	33⅝	132
AMH81405DXC*	140,000	112,000	80	5	24½	28	33⅝	132

<sup>1</sup> Max tons @ 0.5" ESP

Goodman Manufacturing Company, L.P. reserves the right to discontinue, or change at any time, specifications or designs without notice or without incurring obligations.

### Limited Warranty\*

\* Complete warranty details available from your local dealer or at [www.amana-hac.com](http://www.amana-hac.com). To receive the Lifetime Unit Replacement Limited Warranty (good for as long as you own your home) and 10-Year Parts Limited Warranty, online registration must be completed within 60 days of installation. Online registration is not required in California or Quebec.



Amana brand AMH8 Multi-Position, Multi-Speed Gas Furnace features a stainless-steel tubular heat exchanger and durable silicon nitride ignition system. With a heavy-gauge reinforced, insulated steel cabinet and durable baked enamel finish, this unit can be installed in a variety of locations.



### Standard Features

- Two-stage convertible gas valve automatically adjusts to high or low stage
- Durable SureStart™ Silicon Nitride igniter designed for long igniter life
- Quiet single speed draft inducer
- Self-diagnostic control board with constant memory fault code
- Color-coded low-voltage terminals with provisions for electronic air cleaner and humidifier
- Multi-speed blower motor
- Low continuous fan speed options offer quiet air circulation
- California Low NO<sub>x</sub> emissions standards models available

### Cabinet Features

- Multi-position installation: upflow, horizontal left or right
- Convenient left or right connection for gas and electrical service
- Cabinet air leakage ≤ 2%
- Heavy-gauge steel cabinet with durable baked-enamel finish
- Fully insulated heat exchanger and blower section



## AMS8 / Single-Stage / Multi-Speed / 80% AFUE

Model	Heating Fire Rate (BTU/h)		AFUE %	Tons A/C <sup>1</sup>	Dimensions			Ship Weight (lbs)
	Input	Output			W"	D"	H"	
AMS80403A*B*	40,000	32,000	80%	3	14	28	33 $\frac{3}{8}$	84
AMS80603A*B*	60,000	48,000	80%	3	14	28	33 $\frac{3}{8}$	88
AMS80604B*B*	60,000	48,000	80%	4	17 $\frac{1}{2}$	28	33 $\frac{3}{8}$	98
AMS80804B*B*	80,000	64,000	80%	4	17 $\frac{1}{2}$	28	33 $\frac{3}{8}$	106
AMS80805C*B*	80,000	64,000	80%	5	21	28	33 $\frac{3}{8}$	114
AMS81005C*B*	100,000	80,000	80%	5	21	28	33 $\frac{3}{8}$	118
AMS81205D*B*	120,000	96,000	80%	5	24 $\frac{1}{2}$	28	33 $\frac{3}{8}$	130
AMS81405D*C*	140,000	112,000	80%	5	24 $\frac{1}{2}$	28	33 $\frac{3}{8}$	130

<sup>1</sup> Max tons @ 0.5" ESP

Goodman Manufacturing Company, L.P. reserves the right to discontinue, or change at any time, specifications or designs without notice or without incurring obligations.

### Limited Warranty\*

\* Complete warranty details available from your local dealer or at [www.amana-hac.com](http://www.amana-hac.com). To receive the Lifetime Heat Exchanger Limited Warranty (good for as long as you own your home) and the 10-Year Parts Limited Warranty, online registration must be completed within 60 days of installation. Online registration is not required in California or Quebec.



Amana brand AMS8 Single-Stage, Multi-Speed Gas Furnace features a stainless steel heat exchanger and self-diagnostic control board.



### Standard Features

- Single-stage gas valve
- Durable Silicon Nitride ignitor
- Quiet, single-speed draft inducer
- Self-diagnostic control board
- Color-coded low-voltage terminals
- Multi-speed blower motor
- Certain models comply with California Low NO<sub>x</sub> emissions standards

### Cabinet Features

- Installation: Upflow, horizontal left or right
- Convenient left or right connection for gas and electrical service
- Cabinet air leakage ≤ 2%
- Heavy-gauge steel cabinet with durable baked-enamel finish
- Foil-faced insulated heat exchanger cabinet

## ADSH8 / Two-Stage Convertible / Multi-Speed / 80% AFUE

Model	Heating Fire Rate (BTU/h)		AFUE %	Tons A/C <sup>1</sup>	Dimensions			Ship Weight (lbs)
	Input	Output			W"	D"	H"	
ADSH800403A*A*	40,000	32,000	80	3	14	28	33⅝	88
ADSH800603A*A*	60,000	48,000	80	3	14	28	33⅝	92
ADSH800804B*A*	80,000	64,000	80	4	17½	28	33⅝	106
ADSH801005C*A*	100,000	80,000	80	5	21	28	33⅝	114

<sup>1</sup> Max tons @ 0.5" ESP

Goodman Manufacturing Company, L.P. reserves the right to discontinue, or change at any time, specifications or designs without notice or without incurring obligations.

### Limited Warranty\*

\* Complete warranty details available from your local dealer or at [www.amana-hac.com](http://www.amana-hac.com). To receive the Lifetime Unit Replacement Limited Warranty (good for as long as you own your home) and 10-Year Parts Limited Warranty, online registration must be completed within 60 days of installation. Online registration is not required in California or Quebec.



Amana brand ADSH8 Two-stage Convertible, Multi-Speed Gas Furnace features a stainless-steel tubular heat exchanger and durable silicon nitride ignition system. With a heavy-gauge reinforced, insulated steel cabinet and durable baked enamel finish, this unit can be installed in a variety of locations.



### Standard Features

- Two-stage convertible gas valve automatically adjusts to high or low stage
- Durable SureStart™ Silicon Nitride igniter
- Quiet single-speed draft inducer
- Self-diagnostic control board with constant memory fault code
- Color-coded low-voltage terminals with provisions for electronic air cleaner and humidifier
- Multi-speed blower motor
- Low continuous fan speed options offer quiet air circulation
- California Low NO<sub>x</sub> emissions standards models available

### Cabinet Features

- Installation: dedicated downflow
- Convenient left or right connection for gas and electrical service
- Cabinet air leakage ≤ 2%
- Heavy-gauge steel cabinet with durable baked-enamel finish
- Fully insulated heat exchanger and blower section



## ADSS8 / Single-Stage / Multi-Speed / 80% AFUE

Model	Heating Fire Rate (BTU/h)		AFUE %	Tons A/C <sup>1</sup>	Dimensions			Ship Weight (lbs)
	Input	Output			W"	D"	H"	
ADSS800403A*A*	40,000	32,000	80	3	14	28	33 $\frac{3}{8}$	88
ADSS800603A*A*	60,000	48,000	80	3	14	28	33 $\frac{3}{8}$	92
ADSS800804B*A*	80,000	64,000	80	4	17 $\frac{1}{2}$	28	33 $\frac{3}{8}$	105
ADSS801005C*A*	100,000	80,000	80	5	21	28	33 $\frac{3}{8}$	113

<sup>1</sup> Max tons @ 0.5" ESP

Goodman Manufacturing Company, L.P. reserves the right to discontinue, or change at any time, specifications or designs without notice or without incurring obligations.

### Limited Warranty\*

\* Complete warranty details available from your local dealer or at [www.amana-hac.com](http://www.amana-hac.com). To receive the Lifetime Heat Exchanger Limited Warranty (good for as long as you own your home) and the 10-Year Parts Limited Warranty, online registration must be completed within 60 days of installation. Online registration is not required in California or Quebec.



Amana brand ADSS8 Downflow Single-Stage, Multi-Speed Gas Furnace features a stainless steel heat exchanger and self-diagnostic control board.



### Standard Features

- Single-stage gas valve
- Durable Silicon Carbide ignitor
- Quiet, single-speed draft inducer
- Self-diagnostic control board
- Color-coded low-voltage terminals
- Multi-speed blower motor
- Certain models comply with California Low NO<sub>x</sub> emissions standards

### Cabinet Features

- Installation: dedicated downflow
- Convenient left or right connection for gas and electrical service
- Cabinet air leakage ≤ 2%
- Heavy-gauge steel cabinet with durable baked-enamel finish
- Foil-faced insulated heat exchanger cabinet





# AIR HANDLERS AND EVAPORATOR COILS



## AVPEC / Variable-Speed / ComfortNet®-Compatible / Multi-Position

Model	Cooling (Tons)	Voltage-Phase	Dimensions			Service Valve		Ship Weight (lbs)
			W"	D"	H"	Liquid"	Suction"	
AVPEC25B14	2	208/240	17½	21	53 <sup>7</sup> / <sub>16</sub>	¾	¾	128
AVPEC37C14	3	208/240	21	21	53 <sup>7</sup> / <sub>16</sub>	¾	7/8	150
AVPEC59D14	4	208/240	24½	21	53 <sup>7</sup> / <sub>16</sub>	¾	7/8	160
AVPEC61D14	5	208/240	24½	21	58	¾	7/8	177

Goodman Manufacturing Company, L.P. reserves the right to discontinue, or change at any time, specifications or designs without notice or without incurring obligations.

### Limited Warranty\*

\* Complete warranty details available from your local dealer or at [www.amana-hac.com](http://www.amana-hac.com). To receive the 10-Year Parts Limited Warranty, online registration must be completed within 60 days of installation. Online registration is not required in California or Quebec.



The Amana brand AVPEC Multi-Position, Multi-Speed Air Handler features the SmartFrame™ cabinet with a 21" depth for easy attic access and includes a direct-drive, multi-speed motor for air-volume variation. The AVPEC may be installed in a variety of locations.



### Standard Features

- Electronic Expansion Valve (EEV) for cooling and heat pump applications
- Variable-speed ECM blower motor
- Suitable for operation with inverter-driven products
- ComfortNet® Communicating Control System compatible
- Constant CFM over a wide range of static pressure conditions independent of duct system
- CFM indicator
- Thermostat provides adjustable low CFM for efficient fan-only operation
- All-aluminum evaporator coil
- Fault recall of six most recent faults
- Improved humidity and comfort control
- 3 kW–25 kW electric heater kits
- AHRI certified; ETL listed

### Cabinet Features

- Cabinet air leakage less than 2.0% at 1.0 inch H<sub>2</sub>O when tested in accordance with ASHRAE standard 193
- Cabinet air leakage less than 1.4% at 0.5 inch H<sub>2</sub>O when tested in accordance with ASHRAE standard 193
- Horizontal or vertical configuration capabilities
- 21" depth for easier attic access
- DecaBDE-free thermoplastic drain pan with secondary drain connections
- Screw-less sides and back helps to reduce condensation when installed in humid locations
- Foil-faced insulation covers the internal casing to reduce cabinet condensation
- Galvanized, leather grain-embossed finish
- Glue-less cabinet insulation retention
- Tool-less filter access



## AVPTC / Variable-Speed / ComfortNet® Controller-Compatible / Multi-Position

Model	Cooling (Tons)	Voltage-Phase	Dimensions			Service Valve		Ship Weight (lbs)
			W"	D"	H"	Liquid"	Suction"	
AVPTC25B14A*	2	208/240	17½	21	45	¾	¾	116
AVPTC29B14A*	2	208/240	17½	21	53⅞	¾	7/8	129
AVPTC31C14A*	2½	208/240	19⅞	21	53⅞	¾	7/8	144
AVPTC33C14*	2½	208/240	19⅞	21	49	¾	7/8	118
AVPTC35B14A*	2½	208/240	17½	21	45	¾	¾	116
AVPTC37B14A*	3	208/240	16¾	21	53⅞	¾	7/8	129
AVPTC37C14A*	3	208/240	19⅞	21	53⅞	¾	7/8	144
AVPTC37D14A*	3	208/240	23⅞	21	53⅞	¾	7/8	155
AVPTC39C14*	3	208/240	19⅞	21	49	¾	7/8	118
AVPTC49C14*	4	208/240	19⅞	21	49	¾	7/8	125
AVPTC49D14A*	4	208/240	23⅞	21	58	¾	7/8	167
AVPTC59C14A*	4½	208/240	19⅞	21	53⅞	¾	7/8	144
AVPTC59D14A*	4½	208/240	23⅞	21	53⅞	¾	7/8	155
AVPTC61D14A*	5	208/240	23⅞	21	58	¾	7/8	167

Goodman Manufacturing Company, L.P. reserves the right to discontinue, or change at any time, specifications or designs without notice or without incurring obligations.

### Limited Warranty\*

\* Complete warranty details available from your local dealer or at [www.amana-hac.com](http://www.amana-hac.com). To receive the 10-Year Parts Limited Warranty, online registration must be completed within 60 days of installation. Online registration is not required in California or Quebec.



### Standard Features

- Internal factory-installed thermal expansion valves for cooling and heat pump applications
- Variable-speed ECM blower motor
- ComfortNet® Communicating Control System compatible
- Auto configuration of the airflow and tonnage in communicating mode
- Provides constant CFM over a wide range of static pressure conditions independent of duct system
- CFM indicator
- Fault recall of six most recent faults
- Provides adjustable low CFM for efficient fan-only operation
- Improved humidity and comfort control
- Built-in compatibility with multi-stage heat pump and cooling applications
- All-aluminum evaporator coil
- 3 kW–25 kW electric heater kits
- AHRI certified; ETL listed

### Cabinet Features

- Rigid SmartFrame™ cabinet
- Cabinet air leakage less than 2.0% at 1.0 inch H<sub>2</sub>O when tested in accordance with ASHRAE standard 193
- Cabinet air leakage less than 1.4% at 0.5 inch H<sub>2</sub>O when tested in accordance with ASHRAE standard 193
- Horizontal or vertical configuration capabilities
- 21" depth for easier attic access
- DecaBDE-free thermoplastic drain pan with secondary drain connections
- Screw-less sides and back helps to reduce condensation when installed in humid locations
- Foil-faced insulation covers the internal casing to reduce cabinet condensation
- Galvanized, leather grain-embossed finish
- Glue-less cabinet insulation retention
- Tool-less filter access

The Amana brand AVPTC Multi-Position, Variable-Speed Air Handler is optimized for use with the chlorine-free refrigerant, R-410A. This unit's ECM blower motor allows for a soft start and stop for quiet operation and helps reduce the cold blast of air upon heating start-up.



## ASPT / Multi-Position / SmartFrame™

Model	Cooling (Tons)	Voltage	Dimensions			Service Valve		Ship Weight (lbs)
			W"	D"	H"	Liquid"	Suction"	
ASPT25B14*	2	208/230-1	17½	21	45	¾	¾	116
ASPT29B14*	2	208/230-1	17½	21	53⅞	¾	7/8	129
ASPT33C14*	2½	208/230-1	21	21	49	¾	7/8	118
ASPT35B14*	2½	208/230-1	17½	21	45	¾	¾	129
ASPT37B14*	3	208/230-1	17½	21	53⅞	¾	7/8	129
ASPT37C14*	3	208/230-1	21	21	53⅞	¾	7/8	144
ASPT39C14*	3	208/230-1	21	21	49	¾	7/8	118
ASPT47C14*	3½	208/230-1	21	21	53⅞	¾	7/8	144
ASPT47D14*	3½	208/230-1	24½	21	53⅞	¾	7/8	155
ASPT49C14*	4	208/230-1	21	21	49	¾	7/8	125
ASPT49D14*	4	208/230-1	24½	21	58	¾	7/8	167
ASPT59C14*	5	208/230-1	21	21	53⅞	¾	7/8	144
ASPT61D14*	5	208/230-1	24½	21	58	¾	7/8	167

Goodman Manufacturing Company, L.P. reserves the right to discontinue, or change at any time, specifications or designs without notice or without incurring obligations.

### Limited Warranty\*

\* Complete warranty details available from your local dealer or at [www.amana-hac.com](http://www.amana-hac.com). To receive the 10-Year Parts Limited Warranty, online registration must be completed within 60 days of installation. Online registration is not required in California or Quebec.



The Amana brand ASPT Multi-Position, Multi-Speed Air Handler features the SmartFrame™ cabinet with a 21" depth for easy attic access and includes a direct-drive, multi-speed motor for air-volume variation. The ASPT may be installed in a variety of locations.



### Standard Features

- Internal factory-installed thermal expansion valves for cooling and heat pump applications
- Direct drive, multi-speed ECM blower motor
- All-aluminum evaporator coil
- Coil mounting track for quick repositioning
- Optimized for use with R-410A refrigerant
- Cabinet air leakage less than 2.0% at 1.0 inch H<sub>2</sub>O when tested in accordance with ASHRAE standard 193
- Cabinet air leakage less than 1.4% at 0.5 inch H<sub>2</sub>O when tested in accordance with ASHRAE standard 193
- 3 kW – 25 kW electric heater kits
- AHRI certified; ETL listed

### Cabinet Features

- Rigid SmartFrame™ cabinet
- Horizontal or vertical configuration capabilities
- 21" depth for easier attic access
- DecaBDE-free thermoplastic drain pan with secondary drain connections
- Screw-less sides and back helps to reduce condensation when installed in humid locations
- Foil-faced insulation covers the internal casing to reduce cabinet condensation
- Galvanized, leather grain-embossed finish
- Glue-less cabinet insulation retention
- Tool-less filter access

## ARUF / Multi-Position / Multi-Speed PSC Motor

Model	Cooling (Tons)	Voltage	Dimensions			Connection Size		Ship Weight (lbs)
			W"	D"	H"	Liquid"	Suction"	
ARUF25B14*	2	208/230-1	17½	21	45	¾	¾	100
ARUF29B14*	2	208/230-1	17½	21	45	¾	¾	100
ARUF31B14*	2½	208/230-1	17½	21	53 <sup>7</sup> / <sub>16</sub>	¾	7/8	110
ARUF37C14*	3	208/230-1	21	21	53 <sup>7</sup> / <sub>16</sub>	¾	7/8	130
ARUF37D14*	3	208/230-1	24½	21	53 <sup>7</sup> / <sub>16</sub>	¾	7/8	140
ARUF43C14*	3½	208/230-1	21	21	53 <sup>7</sup> / <sub>16</sub>	¾	7/8	130
ARUF43D14*	3½	208/230-1	24½	21	53 <sup>7</sup> / <sub>16</sub>	¾	7/8	145
ARUF47D14*	3½	208/230-1	24½	21	58	¾	7/8	150
ARUF49C14*	4	208/230-1	21	21	53 <sup>7</sup> / <sub>16</sub>	¾	7/8	135
ARUF49D14*	4	208/230-1	24½	21	53 <sup>7</sup> / <sub>16</sub>	¾	7/8	145
ARUF61D14*	5	208/230-1	24½	21	58	¾	7/8	155

Goodman Manufacturing Company, L.P. reserves the right to discontinue, or change at any time, specifications or designs without notice or without incurring obligations.

### Limited Warranty\*

\* Complete warranty details available from your local dealer or at [www.amana-hac.com](http://www.amana-hac.com). To receive the 10-Year Parts Limited Warranty, online registration must be completed within 60 days of installation. Online registration is not required in California or Quebec.



The Amana brand ARUF Multi-Position Air Handler features the SmartFrame™ cabinet with a 21" depth for easy attic access. This unit includes a check flowrator expansion device as well as direct-drive, multi-speed motor for air-volume variation. The ARUF is ideal for new or retrofit applications and may be installed in a variety of locations.



### Standard Features

- Check flowrator for cooling and heat pump applications
- Direct drive, multi-speed PSC blower motor
- All-aluminum evaporator coil
- Coil mounting track for quick repositioning
- Cabinet air leakage less than 2.0% at 1.0 inch H<sub>2</sub>O when tested in accordance with ASHRAE standard 193
- Cabinet air leakage less than 1.4% at 0.5 inch H<sub>2</sub>O when tested in accordance with ASHRAE standard 193
- 3 kW – 25 kW electric heater kits
- AHRI certified; ETL listed

### Cabinet Features

- Rigid SmartFrame™ cabinet
- Horizontal or vertical configuration capabilities
- 21" depth for easier attic access
- DecaBDE-free thermoplastic drain pan with secondary drain connections
- Screw-less sides and back helps to reduce condensation when installed in humid locations
- Foil-faced insulation covers the internal casing to reduce cabinet condensation
- Galvanized, leather grain-embossed finish
- Glue-less cabinet insulation retention
- Tool-less filter access

## MBVC/MBR / Multi-Position / Variable-Speed ECM-Based Modular Blower

Model	Voltage	Dimensions			Ship Weight (lbs)
		W"	D"	H"	
MBVC1200AA-1	208/230-1	17½	21	26	67
MBVC1600AA-1	208/230-1	21	21	30	80
MBVC2000AA-1	208/230-1	24½	21	30	86
MBR0800AA-1	208/230-1	17½	21	26	67
MBR1200AA-1	208/230-1	17½	21	26	62
MBR1600AA-1	208/230-1	21	21	30	73
MBR2000AA-1	208/230-1	24½	21	30	84

Goodman Manufacturing Company, L.P. reserves the right to discontinue, or change at any time, specifications or designs without notice or without incurring obligations.

### Limited Warranty\*

\* Complete warranty details available from your local dealer or at [www.amana-hac.com](http://www.amana-hac.com). To receive the 10-Year Parts Limited Warranty, online registration must be completed within 60 days of installation. Online registration is not required in California or Quebec.



The Amana brand MBVC/MBR modular blowers are tailor-made for exceptional energy efficiency. MBVC modules are ComfortNet® communicating control system compatible and the MBVC's ECM blower motor assemblies increase both installation and application flexibility. Both units can be matched with cased coils for upflow, downflow, and horizontal applications.



### MBVC

#### Standard Features

- Variable-speed ECM blower motor
- ComfortNet® Communicating Control System compatible
- Advanced configuration of the airflow and tonnage in communicating mode
- Provides constant CFM over a wide range of static pressure conditions independent of duct system
- CFM indicator
- Fault recall of six most recent faults
- Provides adjustable low CFM for efficient fan-only operation
- Improved humidity and comfort control
- Built-in compatibility with multi-stage heat pump and cooling applications
- 3 kW–20 kW electric heat kits available
- Blower section usable as electric heater

#### Cabinet Features

- Horizontal or vertical configuration capabilities
- 21" depth for easier attic access
- Foil-faced insulation covers the internal casing to reduce cabinet condensation
- Galvanized, leather grain-embossed finish
- Cabinet air leakage less than 2% at 1.0 inch H<sub>2</sub>O when tested in accordance with ASHRE standard 193
- Cabinet air leakage less than 1.4% at 0.5 inch H<sub>2</sub>O when tested in accordance with ASHRE standard 193
- AHRI certified; ETL listed

### MBR

#### Standard Features

- Direct drive, multi-speed PSC blower motor
- Cooling or heat pump applications: upflow, downflow, and horizontal
- Blower section usable as an electric furnace
- Control board includes a fan delay in the cooling mode and is isolated from the air stream
- Intended for use with CAPF/CHPF cased evaporator coils
- CAPF/CHPF coils are equipped with a check flowrater
- AHRI certified; ETL listed

#### Cabinet Features

- Painted, galvanized steel cabinet
- Horizontal or vertical configuration capabilities
- 21" depth for easier attic access
- Foil-faced insulation is glued in place and covers the entire blower case to reduce operating sound and cabinet condensation
- Galvanized, leather grain-embossed finish
- 3 kW–20 kW electric heat kits available
- Cabinet air leakage less than 2% at 1.0 inch H<sub>2</sub>O when tested in accordance with ASHRE standard 193
- Cabinet air leakage less than 1.4% at 0.5 inch H<sub>2</sub>O when tested in accordance with ASHRE standard 193



## AWUF / Wall-Mount

Model	Cooling (Tons)	Electric Heat (kW)	Voltage	Dimensions			Service Valve		Ship Weight (lbs)
				W"	D"	H"	Liquid"	Suction"	
AWUF180316*	1½	3	208/230-1	20¼	16⅞	36	¾	⅝	84
AWUF180516*	1½	5	208/230-1	20¼	16⅞	36	¾	⅝	84
AWUF180816*	1½	8	208/230-1	20¼	16⅞	36	¾	⅝	84
AWUF190316*	1-1½	3	208/230-1	20¼	16⅞	36	¾	⅝	84
AWUF190516*	1-1½	5	208/230-1	20¼	16⅞	36	¾	⅝	84
AWUF190816*	1-1½	8	208/230-1	20¼	16⅞	36	¾	⅝	84
AWUF240316*	2	3	208/230-1	20¼	16⅞	36	¾	⅝	84
AWUF240516*	2	5	208/230-1	20¼	16⅞	36	¾	⅝	84
AWUF240816*	2	8	208/230-1	20¼	16⅞	36	¾	⅝	84
AWUF241016*	2	10	208/230-1	20¼	16⅞	36	¾	⅝	84
AWUF250316*	2	3	208/230-1	20¼	16⅞	36	¾	⅝	84
AWUF250516*	2	5	208/230-1	20¼	16⅞	36	¾	⅝	84
AWUF250816*	2	8	208/230-1	20¼	16⅞	36	¾	⅝	84
AWUF251016*	2	10	208/230-1	20¼	16⅞	36	¾	⅝	84
AWUF300316*	2½	3	208/230-1	24	21	36	¾	¾	93
AWUF300516*	2½	5	208/230-1	24	21	36	¾	¾	109
AWUF300816*	2½	8	208/230-1	24	21	36	¾	¾	109
AWUF301016*	2½	10	208/230-1	24	21	36	¾	¾	109
AWUF310516*	1½-2½	5	208/230-1	24	21	36	¾	¾	109
AWUF310816*	1½-2½	8	208/230-1	24	21	36	¾	¾	109
AWUF321016*	1½-2½	10	208/230-1	24	21	36	¾	¾	109
AWUF360516*	2½-3	5	208/230-1	24	21	36	¾	¾	96
AWUF360816*	2½-3	8	208/230-1	24	21	36	¾	¾	96
AWUF361016*	2½-3	10	208/230-1	24	21	36	¾	¾	96
AWUF370516*	2½-3	5	208/230-1	24	21	36	¾	¾	96
AWUF370816*	2½-3	8	208/230-1	24	21	36	¾	¾	96
AWUF371016*	2½-3	10	208/230-1	24	21	36	¾	¾	96

Goodman Manufacturing Company, L.P. reserves the right to discontinue, or change at any time, specifications or designs without notice or without incurring obligations.

### Limited Warranty\*

\* Complete warranty details available from your local dealer or at [www.amana-hac.com](http://www.amana-hac.com). To receive the 10-Year Parts Limited Warranty, online registration must be completed within 60 days of installation. Online registration is not required in California or Quebec.



The Amana brand AWUF Air Handler is designed to be vertically wall- or stud-mounted. This unit features a check flowrater and direct-drive, multi-speed motor. The AWUF is housed in a fully insulated, galvanized-steel cabinet.



### Standard Features

- Equipped with a Check Flowrater for cooling-only and heat pump operation
- Direct-drive, multi-speed motors allows air volume variation for heating/cooling
  - Multi-speed ECM: AWUF19, 25, 31, 32, 37
  - Multi-speed PSC motor: AWUF18, 24, 30, 36
- Sequence-controlled, rust-resistant nickel chromium heating elements of 3, 5, 8, or 10 kW
- Aluminum tubing coils on all models
- AHRI Certified; ETL Listed

### Cabinet Features

- Cabinet air leakage less than 2.0% at 1.0 inch H<sub>2</sub>O when tested in accordance with ASHRAE standard 193
- Cabinet air leakage less than 1.4% at 0.5 inch H<sub>2</sub>O when tested in accordance with ASHRAE standard 193
- Factory-installed pull-type disconnect
- Thermoplastic drain pan with bottom primary and secondary drain connections
- Built-in filter rack (filter included)
- Large chassis (2½- and 3-ton units) – front return only
- Small chassis (1½- and 2-ton units) – front or bottom return
- Wall-hanging bracket provided

## AWUT / Wall-Mount

Model	Cooling (Tons)	Electric Heat (kW)	Voltage	Dimensions			Service Valve		Ship Weight (lbs)
				W"	D"	H"	Liquid"	Suction"	
AWUT310516*	2½	5	208/230-1	24	21	36	¾	¾	109
AWUT310816*	2½	8	208/230-1	24	21	36	¾	¾	109
AWUT321016*	2½	10	208/230-1	24	21	36	¾	¾	109
AWUT370516*	3	5	208/230-1	24	21	36	¾	¾	96
AWUT370816*	3	8	208/230-1	24	21	36	¾	¾	96
AWUT371016*	3	10	208/230-1	24	21	36	¾	¾	96

Goodman Manufacturing Company, L.P. reserves the right to discontinue, or change at any time, specifications or designs without notice or without incurring obligations.

### Limited Warranty\*

\* Complete warranty details available from your local dealer or at [www.amana-hac.com](http://www.amana-hac.com). To receive the 10-Year Parts Limited Warranty, online registration must be completed within 60 days of installation. Online registration is not required in California or Quebec.



The Amana brand AWUF Air Handler is designed to be vertically wall- or stud-mounted. This unit features a check flowrator and direct-drive, multi-speed motor. The AWUF is housed in a fully insulated, galvanized-steel cabinet.



### Standard Features

- Factory installed thermal expansion valve (TXV)
- Multi-speed motors allows air volume variation for heating/cooling
  - Multi-speed ECM: AWUT31, 32, 37
- Sequence-controlled, rust-resistant nickel chromium heating elements of 5, 8, or 10 kW
- Aluminum tubing coils on all models
- AHRI Certified; ETL Listed

### Cabinet Features

- Cabinet air leakage less than 2.0% at 1.0 inch H<sub>2</sub>O when tested in accordance with ASHRAE standard 193
- Cabinet air leakage less than 1.4% at 0.5 inch H<sub>2</sub>O when tested in accordance with ASHRAE standard 193
- Factory-installed pull-type disconnect
- Thermoplastic drain pan with bottom primary and secondary drain connections
- Built-in filter rack (filter included)
- Large chassis (2½- and 3-ton units) – front return only
- Wall-hanging bracket provided

**ACNF** / Ceiling-Mounted

Model	Cooling Capacity (tons)	Airflow (CFM) High/Low	Electric Heat (kW)	Voltage (VAC)	Dimensions			Service Valve		Ship Weight (lbs)
					W"	D"	H"	Liquid"	Suction"	
ACNF180016*	1½	660/595	0	208/230	37¼	21	10	¾	¾	59
ACNF180516*	1½	660/595	5	208/230	37¼	21	10	¾	¾	59
ACNF180616*	1½	660/595	6	208/230	37¼	21	10	¾	¾	59
ACNF180816*	1½	660/595	7	208/230	37¼	21	10	¾	¾	59
ACNF240016*	2	880/840	0	208/230	43¼	21	10	¾	¾	69
ACNF240516*	2	880/840	5	208/230	43¼	21	10	¾	¾	69
ACNF240616*	2	880/840	6	208/230	43¼	21	10	¾	¾	69
ACNF240816*	2	880/840	7	208/230	43¼	21	10	¾	¾	69
ACNF241016*	2	880/840	10	208/230	43¼	21	10	¾	¾	69
ACNF250016*	2	912/610	0	208/230	43¼	21	10	¾	¾	69
ACNF250516*	2	912/610	5	208/230	43¼	21	10	¾	¾	69
ACNF250616*	2	912/610	6	208/230	43¼	21	10	¾	¾	69
ACNF250816*	2	912/610	7	208/230	43¼	21	10	¾	¾	69
ACNF251016*	2	912/610	10	208/230	43¼	21	10	¾	¾	69
ACNF300016*	2½	1005/890	0	208/230	49¼	21	10	¾	¾	79
ACNF300516*	2½	1005/890	5	208/230	49¼	21	10	¾	¾	79
ACNF300616*	2½	1005/890	6	208/230	49¼	21	10	¾	¾	79
ACNF300816*	2½	1005/890	7	208/230	49¼	21	10	¾	¾	79
ACNF301016*	2½	1005/890	10	208/230	49¼	21	10	¾	¾	79
ACNF310016*	2½	928/695	0	208/230	49¼	21	10	¾	¾	79
ACNF310516*	2½	928/695	5	208/230	49¼	21	10	¾	¾	79
ACNF310616*	2½	928/695	6	208/230	49¼	21	10	¾	¾	79
ACNF310816*	2½	928/695	7	208/230	49¼	21	10	¾	¾	79
ACNF311016*	2½	928/695	10	208/230	49¼	21	10	¾	¾	79

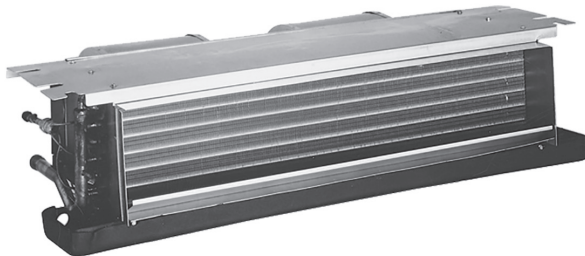
Goodman Manufacturing Company, L.P. reserves the right to discontinue, or change at any time, specifications or designs without notice or without incurring obligations.

**Limited Warranty\***

\* Complete warranty details available from your local dealer or at [www.amana-hac.com](http://www.amana-hac.com). To receive the 10-Year Parts Limited Warranty, online registration must be completed within 60 days of installation. Online registration is not required in California or Quebec.



The Amana brand ACNF Electric Heat Air Handler is designed to be ceiling-mounted. This unit features a check flowrator and direct-drive, resilient-mount, multi-speed motor. The ACNF has galvanized-steel construction and quiet operation.


**Standard Features**

- Check flowrator for heat pump and cooling-only applications
- All-Aluminum tube/aluminum fin coil
- Direct-drive, resilient-mount, multi-speed motor
- Sequence-controlled and rust-resistant nickel chromium heating elements of 5, 6, 8 or 10 kW
- High-efficiency evaporator coil
- Quiet operation
- Models with EEM motor: ACNF25 & ACNF31
- Models with PSC motors: ACNF18, ACNF24, & ACNF30
- Available with and without heat
- AHRI Certified; ETL Listed

**Cabinet Features**

- Primary/secondary drain connection in a high-temperature plastic drain pan
- Suitable for free-return installation (non-ducted return air)
- Galvanized-steel construction
- Factory-installed pull-type disconnect
- Easy service access

## CAPT / Cased Indoor "A" / Internal TXV / Upflow and Downflow

Model	Cabinet Dimensions			Nominal Tons	Connection		Ship Weight (lbs)
	W"	D"	H"		Liquid"	Suction"	
CAPT3131B4*	17½	21	22	2½	¾	¾	46
CAPT3131C4*	21	21	22	2½	¾	¾	50
CAPT3743C4*	21	21	30	3-3½	¾	7/8	63
CAPT3743D4*	24½	21	30	3-3½	¾	7/8	75
CAPT4961C4*	21	21	30	4-5	¾	7/8	73
CAPT4961D4*	24½	21	30	4-5	¾	7/8	76

Goodman Manufacturing Company, L.P. reserves the right to discontinue, or change at any time, specifications or designs without notice or without incurring obligations.

### Limited Warranty\*

\* Complete warranty details available from your local dealer or at [www.amana-hac.com](http://www.amana-hac.com). To receive the 10-Year Parts Limited Warranty, online registration must be completed within 60 days of installation. Online registration is not required in California or Quebec.



The Amana brand All-aluminum CAPT Cased coils with a factory-installed TXV is made for split system air conditioners and heat pumps. This unit features aluminum tubing and corrugated aluminum fin coils and rust-resistant, high-temperature, thermoplastic drain pans. The CAPT cabinet is painted architectural gray.



### Standard Features

- All-Aluminum evaporator coil
- Optimized for use with R-410A refrigerant
- Some models suitable for use with R-410A or R-22 refrigerant
- CAPT models feature factory-installed thermal expansion valves for cooling and heat pump applications
- Check flowrator for cooling and heat pump applications
- AHRI certified; ETL listed

### Cabinet Features

- 21" depth for easier attic access
- Split seam front for easy access
- Foil-faced insulation covers the internal casing to reduce cabinet condensation
- Galvanized, leather grain-embossed finish
- Rust resistant, thermoplastic drain pans featuring a low water-retention design
- DecaBDE-free thermoplastic drain pan with secondary drain connections
- UV-resistant drain pan



## CAPF / Cased Indoor "A" / Upflow and Downflow

Model	Dimensions			Nominal Tons	Connection		Ship Weight (lbs)
	W"	D"	H"		Liquid"	Suction"	
CAPFA1818A6*	14	21	18	1½	¾	¾	32
CAPFA1818B6*	17½	21	18	1½	¾	¾	36
CAPF1824A6*	14	21	18	1½-2	¾	¾	32
CAPF1824B6*	17½	21	18	1½-2	¾	¾	35
CAPF1824C6*	21	21	22	1½-2	¾	¾	42
CAPF3030A6*	14	21	22	2½	¾	¾	41
CAPF3030B6*	17½	21	22	2½	¾	¾	43
CAPF3030C6*	21	21	22	2½	¾	¾	44
CAPF3030D6*	24½	21	22	2½	¾	¾	52
CAPF3131B6*	17½	21	22	2½	¾	¾	46
CAPF3131C6*	21	21	22	2½	¾	¾	50
CAPF3137B6*	17½	21	30	2½-3	¾	¾	53
CAPF3636A6*	14	21	22	3	¾	¾	40
CAPF3636B6*	17½	21	22	3	¾	¾	44
CAPF3636C6*	21	21	22	3	¾	¾	53
CAPF3636D6*	24½	21	22	3	¾	¾	51
CAPF3642C6*	21	21	22	3-3½	¾	¾	49
CAPF3642D6*	24½	21	22	3-3½	¾	¾	52
CAPF3743C6*	21	21	30	3-3½	¾	7/8	63
CAPF3743D6*	24½	21	30	3-3½	¾	7/8	75
CAPF4860C6*	21	21	30	4-5	¾	7/8	65
CAPF4860D6*	24½	21	30	4-5	¾	7/8	68
CAPF4961C6*	21	21	30	4-5	¾	7/8	73
CAPF4961D6*	24½	21	30	4-5	¾	7/8	76

Goodman Manufacturing Company, L.P. reserves the right to discontinue, or change at any time, specifications or designs without notice or without incurring obligations.

### Limited Warranty\*

\* Complete warranty details available from your local dealer or at [www.amana-hac.com](http://www.amana-hac.com). To receive the 10-Year Parts Limited Warranty, online registration must be completed within 60 days of installation. Online registration is not required in California or Quebec.



The Amana brand All-aluminum CAPF Cased Upflow/Downflow Indoor Coils are made for split system air conditioners and heat pumps. This unit features aluminum tubing and corrugated aluminum fin coils and rust-resistant, high-temperature, thermoplastic drain pans. The CAPF cabinet is painted architectural gray.



### Standard Features

- All-Aluminum evaporator coil
- Optimized for use with R-410A refrigerant
- Some models suitable for use with R-410A or R-22 refrigerant
- Check flowrator for cooling and heat pump applications
- AHRI certified; ETL listed

### Cabinet Features

- 21" depth for easier attic access
- Split seam front for easy access
- Foil-faced insulation covers the internal casing to reduce cabinet condensation
- Galvanized, leather grain-embossed finish
- Rust resistant, thermoplastic drain pans featuring a low water-retention design
- DecaBDE-free thermoplastic drain pan with secondary drain connections
- UV-resistant drain pan

## CAUF / Uncased Indoor "A" / Upflow

Model	Nominal Tons	Dimensions			Connection		Piston Size	Ship Weight (lbs)
		W"	D"	H"	Liquid"	Suction"		
CAUF1824A6*	1½-2	13	20⅞	16¼	¾	¾	.059	18
CAUF1824B6*	1½-2	16½	20⅞	16⅞	¾	¾	.059	23
CAUF1824C6*	1½-2	20	20⅞	16¾	¾	¾	.059	27
CAUF3030A6*	2½	13	20⅞	20⅞	¾	¾	.065	25
CAUF3030B6*	2½	16½	20⅞	18¾	¾	¾	.065	22
CAUF3030C6*	2½	20	20⅞	17⅞	¾	¾	.065	25
CAUF3030D6*	2½	23	20⅞	17⅞	¾	¾	.065	32
CAUF3131B6*	2½	16½	20⅞	20⅞	¾	¾	.068	27
CAUF3137B6*	2½-3	16½	20⅞	27	¾	¾	.071	53
CAUF3131C6*	2½	20	20⅞	20	¾	¾	.068	31
CAUF3636A6*	3	13	20⅞	19½	¾	¾	.071	30
CAUF3636B6*	3	16½	20⅞	19¾	¾	¾	.071	25
CAUF3636C6*	3	20	20⅞	19⅞	¾	¾	.071	28
CAUF3636D6*	3	23	20⅞	19⅞	¾	¾	.071	36
CAUF3642C6*	3-3½	20	20⅞	19	¾	¾	.078	29
CAUF3642D6*	3-3½	23	20⅞	19⅞	¾	¾	.078	34
CAUF3743C6*	3-3½	20	20⅞	28⅞	¾	⅞	.078	46
CAUF3743D6*	3-3½	23	20⅞	27¾	¾	⅞	.078	43
CAUF4860C6*	4-5	20	20⅞	28	¾	⅞	.093	48
CAUF4860D6*	4-5	23	20⅞	28	¾	⅞	.093	39
CAUF4961C6*	4-5	20	20⅞	28	¾	⅞	.093	54
CAUF4961D6*	4-5	23	20⅞	27	¾	⅞	.093	59

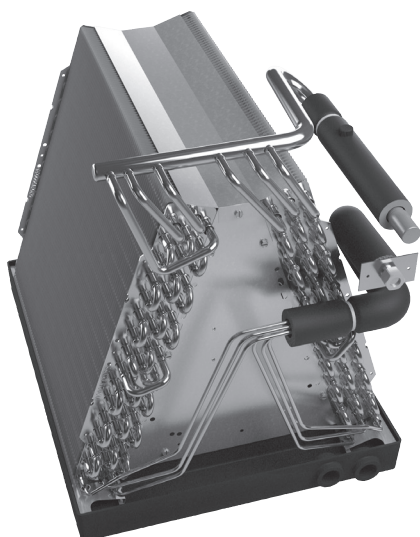
Goodman Manufacturing Company, L.P. reserves the right to discontinue, or change at any time, specifications or designs without notice or without incurring obligations.

### Limited Warranty\*

\* Complete warranty details available from your local dealer or at [www.amana-hac.com](http://www.amana-hac.com). To receive the 10-Year Parts Limited Warranty, online registration must be completed within 60 days of installation. Online registration is not required in California or Quebec.



The Amana brand all-aluminum CAUF Uncased Upflow/Downflow Indoor Coils are made for split system air conditioners and heat pumps. This coil features aluminum tubing and corrugated aluminum fins and rust-resistant, high-temperature, thermoplastic drain pans.



### Standard Features

- All-Aluminum evaporator coil
- Optimized for use with R-410A refrigerant
- Some models suitable for use with R-410A or R-22 refrigerant
- Check flowrate for cooling and heat pump applications
- AHRI certified; ETL listed
- Rust resistant, thermoplastic drain pans featuring a low water-retention design
- DecaBDE-free thermoplastic drain pan with secondary drain connections
- UV-resistant drain pan

**CHPF** / Cased Indoor "A" / Horizontal

Model	Cabinet Dimensions			Plenum Opening		Nominal Tons	Connection		Ship Weight (lbs)
	D"	W"	H"	D"	H"		Liquid"	Suction"	
<b>CHPF1824A6*</b>	21 $\frac{1}{8}$	26	14	19	13	1 $\frac{1}{2}$ –2	$\frac{3}{8}$	$\frac{3}{4}$	36
<b>CHPF2430B6*</b>	21 $\frac{1}{8}$	26	17 $\frac{1}{2}$	19	16 $\frac{1}{2}$	2–2 $\frac{1}{2}$	$\frac{3}{8}$	$\frac{3}{4}$	55
<b>CHPF3636B6*</b>	21 $\frac{1}{8}$	26	17 $\frac{1}{2}$	19	16 $\frac{1}{2}$	3	$\frac{3}{8}$	$\frac{3}{4}$	50
<b>CHPF3642C6*</b>	21 $\frac{1}{8}$	26	21	19	20	3–3 $\frac{1}{2}$	$\frac{3}{8}$	$\frac{3}{4}$	63
<b>CHPF3743C6*</b>	21 $\frac{1}{8}$	26	21	19	20	3– $\frac{1}{2}$	$\frac{3}{8}$	$\frac{7}{8}$	63
<b>CHPF4860D6*</b>	21 $\frac{1}{8}$ "	26	24 $\frac{1}{2}$	19	23 $\frac{1}{2}$	4–5	$\frac{3}{8}$	$\frac{7}{8}$	77

Goodman Manufacturing Company, L.P. reserves the right to discontinue, or change at any time, specifications or designs without notice or without incurring obligations.

**Limited Warranty\***

\* Complete warranty details available from your local dealer or at [www.amana-hac.com](http://www.amana-hac.com). To receive the 10-Year Parts Limited Warranty, online registration must be completed within 60 days of installation. Online registration is not required in California or Quebec.



The **Amana** brand all-aluminum CHPF Cased Horizontal "A" Coils are made for split system air conditioners and heat pumps. Each coil is made of quality galvanized steel with a painted, leather grain-embossed finish. This cabinet is painted architectural gray.


**Standard Features**

- All-Aluminum evaporator coil
- Optimized for use with R-410A refrigerant
- Some models suitable for use with R-410A or R-22 refrigerant
- Check flowrator for cooling and heat pump applications
- AHRI certified; ETL listed

**Cabinet Features**

- 21" depth for easier attic access
- Split seam front for easy access
- Foil-faced insulation covers the internal casing to reduce cabinet condensation
- Galvanized, leather grain-embossed finish
- Rust resistant, thermoplastic drain pans featuring a low water-retention design
- DecaBDE-free thermoplastic drain pan with secondary drain connections
- UV-resistant drain pan

## CSCF / Cased Indoor Slab / Horizontal

Model	Cabinet Dimensions			Plenum Opening		Capacity (Tons)	Connection Size		Ship Weight (lbs)
	W"	D"	H"	D"	H"		Liquid"	Suction"	
<b>CSCF1824N6*</b>	25½	12	25	16	21	1½-2	¾	¾	43
<b>CSCF3036N6*</b>	33½	12	25	24	21	2½-3	¾	7/8	52.5
<b>CSCF3642N6*</b>	39½	12	25	30	21	3-3½	¾	7/8	43
<b>CSCF4860N6*</b>	39½	12	25	30	21	4-5	¾	7/8	60

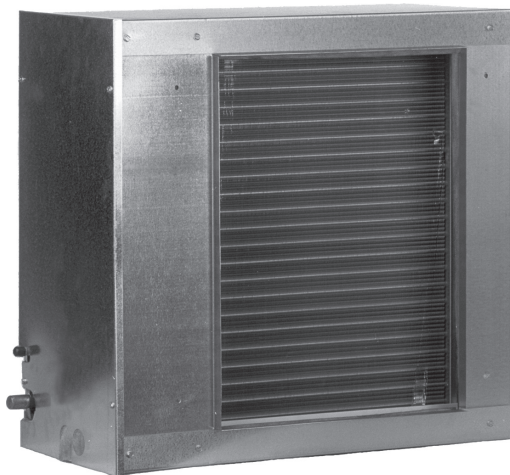
Goodman Manufacturing Company, L.P. reserves the right to discontinue, or change at any time, specifications or designs without notice or without incurring obligations.

### Limited Warranty\*

\* Complete warranty details available from your local dealer or at [www.amana-hac.com](http://www.amana-hac.com). To receive the 10-Year Parts Limited Warranty, online registration must be completed within 60 days of installation. Online registration is not required in California or Quebec.



The Amana brand CSCF Horizontal Slab Evaporator Coils are made for split system air conditioners and heat pumps. This unit features a check flowrator expansion device and rust-resistant, high-temperature, thermoplastic drain pan. Each coil's cabinet has a quality, galvanized-steel finish.



### Standard Features

- All-Aluminum evaporator coil
- Optimized for use with R-410A refrigerant
- Some models suitable for use with R-410A or R-22 refrigerant
- Check flowrator for cooling and heat pump applications
- AHRI certified; ETL listed

### Cabinet Features

- Split seam front for easy access
- Foil-faced insulation covers the internal casing to reduce cabinet condensation
- Galvanized, leather grain-embossed finish
- Rust resistant, thermoplastic drain pans featuring a low water-retention design
- DecaBDE-free thermoplastic drain pan with secondary drain connections
- UV-resistant drain pan



# PACKAGED UNITS



## APC15H / Energy-Efficient Compressor / Up to 15 SEER

Model	Nominal Capacities		Electric Heat (kW)	SEER / EER	Voltage-Phase	Dimensions			dBs	Ship Weight (lbs)	ENERGY STAR® Certified
	Tons	CFM				W"	D"	H"			
APC1524H41A*	2	850	5, 8, 10	15.0/12.0	208/230-1	66½	34	30	76	309	YES
APC1530H41A*	2½	1,050	5, 8, 10, 15	15.0/12.0	208/230-1	66½	34	30	76	314	YES
APC1536H41A*	3	1,200	5, 8, 10, 15	15.0/12.0	208/230-1	66½	34	30	78	324	NO
APC1542H41A*	3½	1,300	5, 8, 10, 15, 20	15.0/12.0	208/230-1	66½	34	30	78	359	YES
APC1548H41A*	4	1,600	5, 8, 10, 15, 20	15.0/12.0	208/230-1	66½	34	35	80	377	YES
APC1560H41A*	5	1,600	5, 8, 10, 15, 20	15.0/12.0	208/230-1	66½	34	35	80	382	NO

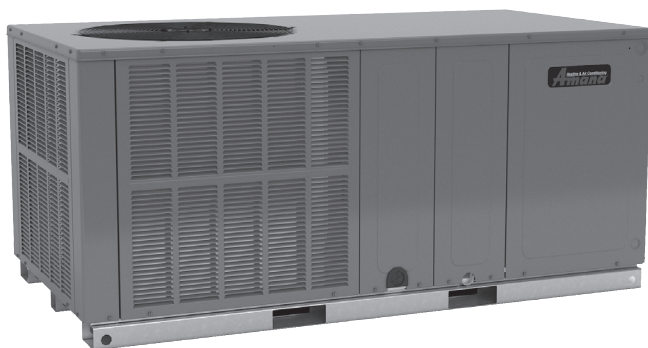
Goodman Manufacturing Company, L.P. reserves the right to discontinue, or change at any time, specifications or designs without notice or without incurring obligations.

### Limited Warranty\*

\* Complete warranty details available from your local dealer or at [www.amana-hac.com](http://www.amana-hac.com). To receive the Lifetime Compressor Limited Warranty (good for as long as you own your home) and the 10-Year Parts Limited Warranty, online registration must be completed within 60 days of installation. Online registration is not required in California or Québec.



The Amana brand APC15H Packaged Air Conditioner contains an energy-efficient compressor and variable-speed blower motor. The APC15H is designed for the consumer who desires comfort and quiet operation.



### Standard Features

- Energy-efficient scroll compressor with internal relief valve
- Variable-speed ECM indoor blower motor
- Quiet horizontal discharge
- All-aluminum evaporator coil
- Copper tube / aluminum fin condenser coil
- Compressor sound blanket
- Totally enclosed, permanently lubricated condenser fan motor
- Fully charged system
- 5 kW to 20 kW electric heat kit available as a field-installed option
- AHRI Certified; ETL listed

### Cabinet Features

- Heavy-gauge galvanized-steel cabinet with attractive Architectural Gray powder-paint finish
- Aluminum foil-facing internal insulation reinforced with fiberglass scrim
- Fully insulated blower compartment has convenient access panels
- Louvered condenser coil protection
- One footprint for all tonnages

## APC14M / Energy-Efficient Compressor / 14 SEER

Model	Nominal Capacities		Electric Heat (kW)	SEER / EER	Voltage-Phase	Dimensions			dBs	Ship Weight (lbs)
	Tons	CFM				W"	D"	H"		
APC1424M41A*	2	800	5, 8, 10	14.0/11.0	208/230-1	47½	51½	35	78	319
APC1430M41A*	2½	1,000	5, 8, 10, 15	14.0/11.0	208/230-1	47½	51½	35	78	342
APC1436M41A*	3	1,200	5, 8, 10, 15	14.0/11.0	208/230-1	47½	51½	35	80	365
APC1442M41A*	3½	1,325	5, 8, 10, 15	14.0/11.0	208/230-1	47½	51½	35	78	388
APC1448M41A*	4	1,600	5, 8, 10, 15, 20	14.0/11.0	208/230-1	47½	51½	42½	81	435
APC1460M41A*	5	1,700	5, 8, 10, 15, 20	14.0/11.0	208/230-1	47½	51½	42½	80	458

Goodman Manufacturing Company, L.P. reserves the right to discontinue, or change at any time, specifications or designs without notice or without incurring obligations.

### Limited Warranty\*

\* Complete warranty details available from your local dealer or at [www.amana-hac.com](http://www.amana-hac.com). To receive the 10-Year Parts Limited Warranty, online registration must be completed within 60 days of installation. Online registration is not required in California or Quebec.



The Amana brand APC14M Packaged Air Conditioner contains an energy-efficient compressor and multi-speed blower motor. The APC14M is designed for the consumer who desires comfort and quiet operation.



### Standard Features

- Energy-efficient scroll compressor with internal relief valve
- Multi-speed ECM indoor blower motor
- Convertible airflow: horizontal or downflow
- All-Aluminum evaporator coil
- Copper tube/aluminum fin condenser coil
- Compressor sound blanket
- Fully charged R-410A system
- Totally enclosed, permanently lubricated condenser fan motor
- Electric heat kit available as a field-installed accessory
- AHRI Certified; ETL Listed

### Cabinet Features

- Heavy-gauge galvanized-steel cabinet with attractive Architectural Gray powder-paint finish
- Aluminum foil-facing internal insulation reinforced with fiberglass scrim
- Fully insulated blower compartment with convenient access panels
- Louvered condenser coil protection
- When properly anchored, meets 2010 Florida Building Code unit integrity requirements for hurricane-type winds (Anchor bracket kits available.)
- One footprint for all tonnages

## APC14H / Energy-Efficient Compressor / 14 SEER

Model	Nominal Capacities		Electric Heat (kW)	SEER / EER	Voltage-Phase	Dimensions			dBs	Ship Weight (lbs)
	Tons	CFM				W"	D"	H"		
APC1424H41**	2	875	5, 8, 10	14.0/12.0	208/230-1	66½	34	30	76	309
APC1430H41**	2½	1,050	5, 8, 10, 15	14.0/12.0	208/230-1	66½	34	30	76	314
APC1436H41**	3	1,200	5, 8, 10, 15, 20	14.0/12.0	208/230-1	66½	34	30	78	324
APC1442H41**	3½	1,300	5, 8, 10, 15, 20	14.0/12.0	208/230-1	66½	34	30	78	359
APC1448H41**	4	1,600	5, 8, 10, 15, 20	14.0/12.0	208/230-1	66½	34	35	80	377
APC1460H41**	5	1,600	5, 8, 10, 15, 20	14.0/11.5	208/230-1	66½	34	35	80	382

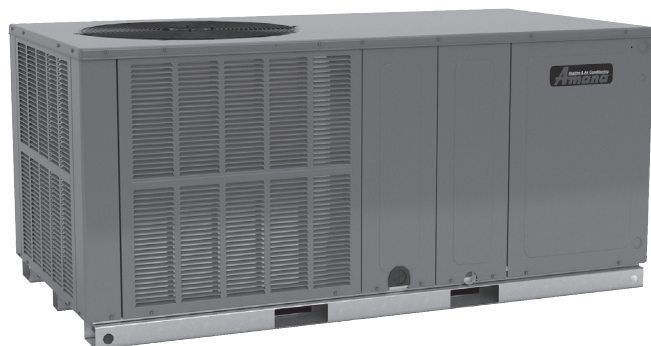
Goodman Manufacturing Company, L.P. reserves the right to discontinue, or change at any time, specifications or designs without notice or without incurring obligations.

### Limited Warranty\*

\* Complete warranty details available from your local dealer or at [www.amana-hac.com](http://www.amana-hac.com). To receive the 10-Year Parts Limited Warranty, online registration must be completed within 60 days of installation. Online registration is not required in California or Quebec.



The Amana brand APC14H Packaged Air Conditioner contains an energy-efficient compressor and multi-speed blower motor. The APC14H is designed for the consumer who desires comfort and quiet operation.



### Standard Features

- Energy-efficient scroll compressor with internal relief valve
- Multi-speed ECM indoor blower motor
- Quiet horizontal discharge
- All-Aluminum evaporator coil
- Copper tube / aluminum fin condenser coil
- Compressor sound blanket
- Totally enclosed, permanently lubricated condenser fan motor
- Fully charged system
- 5 kW to 20 kW electric heat kit available as a field-installed option
- AHRI Certified; ETL listed

### Cabinet Features

- Heavy-gauge galvanized-steel cabinet with attractive Architectural Gray powder-paint finish
- Aluminum foil-facing internal insulation reinforced with fiberglass scrim
- Cabinet air leakage less than 2.0% at 1.0 inch H<sub>2</sub>O when tested in accordance with ASHRAE standard 193
- Cabinet air leakage less than 1.4% at 0.5 inch H<sub>2</sub>O when tested in accordance with ASHRAE standard 193
- Fully insulated blower compartment has convenient access panels
- Louvered condenser coil protection
- One footprint for all tonnages



**APH16M** / High-Efficiency Compressor / Up to 16 SEER / Up to 8.2 HSPF

Model	Nominal Ratings			Electric Heat (kW)	Voltage-Phase/ Hz	SEER/EER	Dimensions			dBs	Ship Weight (lbs)	ENERGY STAR® Certified
	Cooling <sup>1</sup>	Heating <sup>1</sup>	CFM				W"	D"	H"			
<b>APH1624M41**</b>	2	2	850	5, 8, 10	208-230/1/60	16.0/12.0	47½	51½	35	76	376	NO
<b>APH1624M41** +OTHPPKG</b>	2	2	850	5, 8, 10	208-230/1/60	16.0/12.0	47½	51½	35	76	376	NO
<b>APH1630M41**</b>	2½	2½	1,050	5, 8, 10, 15	208-230/1/60	15.5/12.0	47½	51½	35	76	385	NO
<b>APH1630M41** +OTHPPKG</b>	2½	2½	1,050	5, 8, 10, 15	208-230/1/60	15.5/12.0	47½	51½	35	76	385	NO
<b>APH1636M41**</b>	3	3	1,200	5, 8, 10, 15	208-230/1/60	16.0/12.0	47½	51½	34¾	76	438	YES
<b>APH1642M41**</b>	3½	3½	1,300	5, 8, 10, 15	208-230/1/60	16.0/12.0	47½	51½	42½	78	492	YES
<b>APH1648M41**</b>	4	4	1,600	5, 8, 10, 15, 20	208-230/1/60	16.0/12.0	47½	51½	42½	78	490	YES
<b>APH1660M41**</b>	5	5	1,850	5, 8, 10, 15, 20	208-230/1/60	16.0/12.0	48¾	74½	42¾	78	612	NO

<sup>1</sup> Tons

"OTHPPKG" stands for Outdoor Thermostat Heat-Pump Package

Goodman Manufacturing Company, L.P. reserves the right to discontinue, or change at any time, specifications or designs without notice or without incurring obligations.

**Limited Warranty\***

\* Complete warranty details available from your local dealer or at [www.amana-hac.com](http://www.amana-hac.com). To receive the Lifetime Compressor Limited Warranty (good for as long as you own your home) and the 10-Year Parts Limited Warranty, online registration must be completed within 60 days of installation. Online registration is not required in California or Québec.



The Amana brand APH16M Packaged Heat Pump contains an energy-efficient compressor and multi-speed blower motor. The APH16M is designed for the consumer who desires comfort and quiet operation.

**Standard Features**

- High-efficiency two-stage scroll compressor with internal relief valve
- Variable-speed ECM indoor blower motor
- Liquid-line filter drier
- Convertible airflow: horizontal or downflow
- Copper tube/aluminum fin condenser coils
- Compressor sound blanket
- All-aluminum evaporator coil on 2- to 4-ton units
- Aluminum-copper evaporator coil on 5-ton units
- Totally enclosed, permanently lubricated condenser fan motor
- Electric heat kit available as a field-installed option
- AHRI Certified; ETL Listed
- OTHPPKG (Outdoor Thermostat Kit) when used on 2.0 and 2.5 ton allow the unit to achieve 8.2 HSPF

**Cabinet Features**

- Heavy-gauge galvanized-steel cabinet with attractive two-tone Architectural Gray powder-paint finish
- Aluminum foil-facing internal insulation reinforced with fiberglass scrim
- Fully insulated air-handling compartment with convenient access panels
- Louvered condenser coil protection

## APH16H / High-Efficiency Compressor / Up to 16 SEER / Up to 8.2 HSPF

Model	Nominal Ratings			Electric Heat (kW)	SEER / EER	Voltage-Phase	Dimensions			dBs	Ship Weight (lbs)
	Cooling <sup>1</sup>	Heating <sup>1</sup>	CFM				W"	D"	H"		
APH1624H41A*	2	2	875	5, 8, 10	16.0/13.0	208/230-1	66½	34	30	76	324
APH1630H41A*	2½	2½	1,050	5, 8, 10, 15	16.0/12.5	208/230-1	66½	34	30	76	324
APH1636H41A*	3	3	1,200	5, 8, 10, 15	16.0/13.0	208/230-1	66½	34	35	78	387
APH1642H41A*	3½	3½	1,300	5, 8, 10, 15, 20	16.0/12.0	208/230-1	66½	34	35	78	387
APH1642H41B*	3½	3½	1,300	5, 8, 10, 15, 20	16.0/12.0	208/230-1	66½	34	35	79	387
APH1648H41A*	4	4	1,600	5, 8, 10, 15, 20	16.0/12.0	208/230-1	66½	34	35	80	412
APH1660H41A*	5	5	1,700	5, 8, 10, 15, 20	15.5/12.0	208/230-1	66½	34	38¾	80	417

<sup>1</sup> Tons

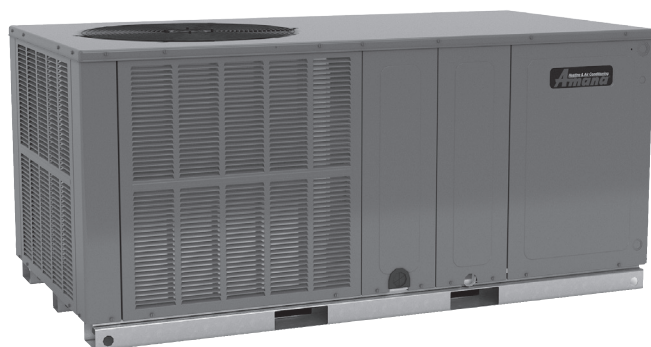
Goodman Manufacturing Company, L.P. reserves the right to discontinue, or change at any time, specifications or designs without notice or without incurring obligations.

### Limited Warranty\*

\* Complete warranty details available from your local dealer or at [www.amana-hac.com](http://www.amana-hac.com). To receive the Lifetime Compressor Limited Warranty (good for as long as you own your home) and the 10-Year Parts Limited Warranty, online registration must be completed within 60 days of installation. Online registration is not required in California or Québec.



The Amana brand APH16H Packaged Heat Pump contains an energy-efficient compressor and variable-speed blower motor. The APH16H is designed for the consumer who desires comfort and quiet operation.



### Standard Features

- High-efficiency scroll compressor
- Variable-speed ECM indoor blower motor
- Quiet horizontal discharge
- All-aluminum evaporator coil
- Copper tube/aluminum fin condenser coils
- Compressor sound blanket
- Totally enclosed, permanently lubricated condenser fan motor
- Fully charged system
- Quiet horizontal discharge
- 5 kW to 20 kW electric heat kit available as a field-installed option
- AHRI Certified; ETL Listed

### Cabinet Features

- Heavy-gauge galvanized-steel cabinet
- Attractive Architectural Gray powder-paint finish
- Aluminum foil-facing internal insulation reinforced with fiberglass scrim
- Cabinet air leakage less than 2.0% at 1.0 inch H<sub>2</sub>O when tested in accordance with ASHRAE standard 193
- Cabinet air leakage less than 1.4% at 0.5 inch H<sub>2</sub>O when tested in accordance with ASHRAE standard 193
- Fully insulated blower compartment has convenient access panels
- Louvered condenser coil protection
- One footprint for all tonnages

**APH14M** / Energy-Efficient Compressor / 14 SEER / 8.0 HSPF

Model	Nominal Ratings			Electric Heat (kW)	SEER / EER	Voltage-Phase	Dimensions			dBs	Ship Weight (lbs)
	Cooling <sup>1</sup>	Heating <sup>1</sup>	CFM				W"	D"	H"		
<b>APH1424M41**</b>	2	2	850	5, 8, 10	14.0/11.0	208/230-1	47½	51½	35	76	380
<b>APH1430M41**</b>	2½	2½	1,050	5, 8, 10, 15	14.0/11.0	208/230-1	47½	51½	35	76	390
<b>APH1436M41**</b>	3	3	1,200	5, 8, 10, 15	14.0/11.0	208/230-1	47½	51½	35	81	400
<b>APH1442M41**</b>	3½	3½	1,300	5, 8, 10, 15	14.0/11.0	208/230-1	47½	51½	35	80	410
<b>APH1448M41**</b>	4	4	1,600	5, 8, 10, 15, 20	14.0/11.0	208/230-1	47½	51½	42½	79	485
<b>APH1460M41**</b>	5	5	1,850	5, 8, 10, 15, 20	14.0/11.0	208/230-1	47½	51½	42½	80	495

<sup>1</sup> Tons

Goodman Manufacturing Company, L.P. reserves the right to discontinue, or change at any time, specifications or designs without notice or without incurring obligations.

**Limited Warranty\***

\* Complete warranty details available from your local dealer or at [www.amana-hac.com](http://www.amana-hac.com). To receive the 10-Year Parts Limited Warranty, online registration must be completed within 60 days of installation. Online registration is not required in California or Quebec.



The Amana brand APH14M Packaged Heat Pump contains an energy-efficient compressor and multi-speed blower motor. The APH14M is designed for the consumer who desires comfort and quiet operation.

**Standard Features**

- Energy-efficient scroll compressor with internal relief valve
- Two-stage cooling on 5-ton units
- Multi-speed ECM indoor blower motor
- All-aluminum evaporator coil
- Copper tube/ aluminum fin condenser coils
- Compressor sound blanket
- Liquid-line filter drier
- Convertible airflow: horizontal or downflow
- Totally enclosed, permanently lubricated condenser fan motor
- Electric heat kit available as a field-installed option
- AHRI certified; ETL listed

**Cabinet Features**

- Heavy-gauge galvanized-steel cabinet with attractive two-tone Architectural Gray powder-paint finish
- Aluminum foil-facing internal insulation reinforced with fiberglass scrim
- Fully insulated air-handling compartment with convenient access panels
- Louvered condenser coil protection
- One footprint for all tonnages

## APH14H / Energy-Efficient Compressor / Up to 14.5 SEER / 8.0 HSPF

Model	Nominal Ratings			Electric Heat (kW)	SEER / EER	Voltage-Phase	Dimensions			dBs	Ship Weight (lbs)
	Cooling <sup>1</sup>	Heating <sup>1</sup>	CFM				W"	D"	H"		
APH1424H41D*	2	2	875	5, 8, 10	14.5/12.0	208/230-1	66½	34	30	76	324
APH1430H41D*	2½	2½	1,050	5, 8, 10, 15	14.0/12.0	208/230-1	66½	34	30	76	324
APH1436H41D*	3	3	1,200	5, 8, 10, 15	14.0/11.5	208/230-1	66½	34	35	78	387
APH1442H41E*	3½	3½	1,300	5, 8, 10, 15, 20	14.0/12.0	208/230-1	66½	34	35	78	387
APH1448H41E*	4	4	1,600	5, 8, 10, 15, 20	14.0/12.0	208/230-1	66½	34	35	80	412
APH1460H41F*	5	5	1,700	5, 8, 10, 15, 20	14.0/12.0	208/230-1	66½	34	38¾	80	412

<sup>1</sup> Tons

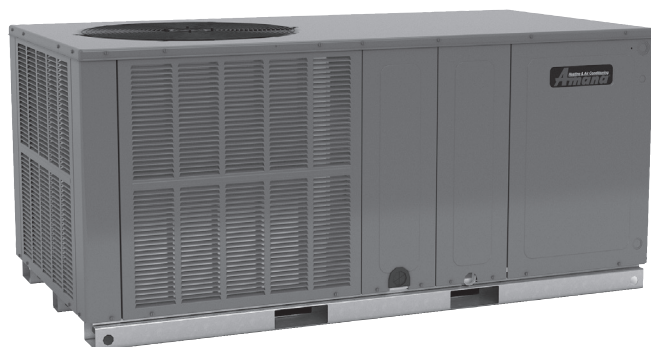
Goodman Manufacturing Company, L.P. reserves the right to discontinue, or change at any time, specifications or designs without notice or without incurring obligations.

### Limited Warranty\*

\* Complete warranty details available from your local dealer or at [www.amana-hac.com](http://www.amana-hac.com). To receive the 10-Year Parts Limited Warranty, online registration must be completed within 60 days of installation. Online registration is not required in California or Quebec.



The Amana brand APH14H Packaged Heat Pump contains an energy-efficient compressor and multi-speed blower motor. This unit is designed for the consumer who desires comfort and quiet operation.



### Standard Features

- Energy-efficient scroll compressor with internal relief valve
- Multi-speed ECM indoor blower motor
- Quiet horizontal discharge
- All-aluminum evaporator coil
- Copper tube/aluminum fin condenser coil
- Compressor sound blanket
- Totally enclosed, permanently lubricated condenser fan motor
- Fully charged system
- 5 kW to 20 kW electric heat kit available as a field-installed option
- AHRI Certified; ETL Listed

### Cabinet Features

- Heavy-gauge galvanized-steel cabinet
- Attractive Architectural Gray powder-paint finish
- Aluminum foil-facing internal insulation reinforced with fiberglass scrim
- Cabinet air leakage less than 2.0% at 1.0 inch H<sub>2</sub>O when tested in accordance with ASHRAE standard 193
- Cabinet air leakage less than 1.4% at 0.5 inch H<sub>2</sub>O when tested in accordance with ASHRAE standard 193
- Fully insulated blower compartment has convenient access panels
- Louvered condenser coil protection
- One footprint for all tonnages



**APG16M** / High-Efficiency Compressor / Up to 16 SEER / 81% AFUE

Model	Nominal Ratings			Voltage-Phase	Dimensions			dBs	Ship Weight (lbs)	ENERGY STAR® Certified
	Cooling <sup>1</sup>	Gas Heat <sup>2</sup>	CFM		W"	D"	H"			
<b>APG1624060M41A*</b>	2	60,000	800	208/230-1	47½	51½	35	76	380	NO
<b>APG1630080M41A*</b>	2½	80,000	950	208/230-1	47½	51½	35	76	407	NO
<b>APG1636080M41A*</b>	3	80,000	1,200	208/230-1	47½	51½	42½	76	480	YES
<b>APG1642100M41A*</b>	3½	100,000	1,250	208/230-1	47½	51½	42½	78	505	YES
<b>APG1648100M41A*</b>	4	100,000	1,300	208/230-1	47½	51½	42½	78	500	YES
<b>APG1660140M41A*</b>	5	138,000	1,850	208/230-1	48¾	74½	42¾	78	655	NO

<sup>1</sup> Tons <sup>2</sup> BTU/h

Goodman Manufacturing Company, L.P. reserves the right to discontinue, or change at any time, specifications or designs without notice or without incurring obligations.

**Limited Warranty\***

\* Complete warranty details available from your local dealer or at [www.amana-hac.com](http://www.amana-hac.com). To receive the Lifetime Heat Exchanger Limited Warranty, the Lifetime Compressor Limited Warranty (in each case, good for as long as you own your home) and 10-Year Parts Limited Warranty, online registration must be completed within 60 days of installation. Online registration is not required in California or Quebec.



The Amana brand APG16M Packaged Gas-Electric Unit contains a high-efficiency compressor and variable-speed blower motor. The two-stage gas valve allows for easy conversion from natural gas to propane gas. The APG16M is designed for the consumer who desires comfort and quiet operation.

**Standard Features**

- Heavy-duty stainless-steel heat exchanger
- High-efficiency two-stage scroll compressor with factory-installed sound blanket
- Variable-speed ECM indoor blower motor
- Copper tube/aluminum fin condenser coils
- All-aluminum evaporator coil on 2- to 4-ton units
- Aluminum-copper evaporator coil on 5-ton units
- Two-stage gas valve; natural gas with easy conversion to propane
- Power-assisted combustion
- AHRI Certified; ETL Listed
- All blower operation and all safety circuits complete with self-diagnostics
- Direct-spark ignition system, including a micro-processor-based control for the entire ignition sequence
- Loss-of-charge protection and high-pressure switch
- California Low NO<sub>x</sub> approved

**Cabinet Features**

- Fully insulated heavy-gauge, zinc-coated steel cabinet with UV-resistant powder-paint finish
- Aluminum foil-facing internal insulation reinforced with fiberglass scrim
- Compressor grommets for vibration isolation
- 2-4 ton models fit a standard-size pick-up truck
- One roof curb fits 2-4 ton units
- Convenient access panels
- Bottom 2" high base rails for easier handling
- When properly anchored, meets 2010 Florida Building Code unit integrity requirements for hurricane-type winds (Anchor bracket kits available.)

## APG14M / Energy-Efficient Compressor / 14 SEER / 81% AFUE

Model	Nominal Ratings			Voltage-Phase	Dimensions			dBs	Ship Weight (lbs)
	Cooling <sup>1</sup>	Gas Heat <sup>2</sup>	CFM		W"	D"	H"		
APG1424040M41A*	2	40,000	800	208/230-1	47½	51½	35	78	435
APG1424060M41A*	2	60,000	800	208/230-1	47½	51½	35	78	439
APG1430040M41A*	2½	40,000	1,000	208/230-1	47½	51½	35	78	438
APG1430060M41A*	2½	60,000	1,000	208/230-1	47½	51½	35	78	442
APG1436040M41A*	3	40,000	1,200	208/230-1	47½	51½	35	78	470
APG1436060M41A*	3	60,000	1,200	208/230-1	47½	51½	35	78	475
APG1436080M41A*	3	80,000	1,200	208/230-1	47½	51½	35	78	480
APG1442060M41A*	3½	60,000	1,300	208/230-1	47½	51½	35	78	515
APG1442080M41A*	3½	80,000	1,300	208/230-1	47½	51½	35	78	520
APG1448060M41A*	4	60,000	1,525	208/230-1	47½	51½	42½	80	540
APG1448080M41A*	4	80,000	1,525	208/230-1	47½	51½	42½	80	545
APG1448100M41A*	4	100,000	1,525	208/230-1	47½	51½	42½	80	550
APG1460080M41A*	5	80,000	1,810	208/230-1	47½	51½	42½	78	555
APG1460100M41A*	5	100,000	1,810	208/230-1	47½	51½	42½	78	560
APG1460120M41A*	5	120,000	1,810	208/230-1	47½	51½	42½	78	565
APG1461080M41A*	5	80,000	1,750	208/230-1	47½	51½	42½	78	555
APG1461100M41A*	5	100,000	1,750	208/230-1	47½	51½	42½	78	560
APG1461120M41A*	5	120,000	1,750	208/230-1	47½	51½	42½	78	565

<sup>1</sup> Tons <sup>2</sup> BTU/h

Goodman Manufacturing Company, L.P. reserves the right to discontinue, or change at any time, specifications or designs without notice or without incurring obligations.

### Limited Warranty\*

\* Complete warranty details available from your local dealer or at [www.amana-hac.com](http://www.amana-hac.com). To receive the Lifetime Heat Exchanger Limited Warranty (good for as long as you own your home) and 10-Year Parts Limited Warranty, online registration must be completed within 60 days of installation. Online registration is not required in California or Quebec.



The Amana brand APG14M Packaged Gas-Electric Unit contains an energy-efficient compressor and multi-speed blower motor. The redundant gas valve allows for easy conversion from natural gas to propane gas. The APG14M is designed for the consumer who desires comfort and quiet operation.



### Standard Features

- Heavy-duty stainless-steel heat exchanger
- Energy-efficient scroll compressor
- Multi-speed ECM indoor blower motor
- All-aluminum evaporator coil
- Aluminum tube/aluminum fin condenser coil
- Compressor sound blanket
- Flowrater expansion device on 2- to 4-ton units; TXV expansion device on 5-ton units
- Redundant gas valve with easy conversion to propane with accessory kit
- Power-assisted combustion
- Direct spark ignition system includes a microprocessor-based control for the entire ignition sequence, all blower operation, and all safety circuits complete with self-diagnostics
- All models comply with California Low NO<sub>x</sub> emission standards
- AHRI Certified; ETL Listed

### Cabinet Features

- High-quality UV-resistant powder-paint finish
- Aluminum foil-facing internal insulation reinforced with fiberglass scrim
- Horizontal or downflow application
- Convenient access panels
- One roof curb fits all units
- Fully insulated cabinet
- Bottom, 2" high base rails for easier handling
- When properly anchored, meets 2010 Florida Building Code unit integrity requirements for hurricane-type winds (Anchor bracket kits available.)
- One footprint for all tonnages

**APD14M** / Energy-Efficient Compressor / Up to 14.5 SEER / 81% AFUE / 8.0 HSPF

Model	Nominal Ratings			Voltage/ Phase/Hz	Dimensions			dBs	Ship Weight (lbs)
	Cooling <sup>1</sup>	Heating <sup>1</sup>	Gas Heat <sup>2</sup>		W"	D"	H"		
<b>APD1424060M41A*</b>	2	2	60,000	208-230/1/61	47½	51½	35	76	440
<b>APD1430080M41A*</b>	2½	2½	80,000	208-230/1/61	47½	51½	35	76	440
<b>APD1436080M41A*</b>	3	3	80,000	208-230/1/61	47½	51½	35	76	460
<b>APD1442100M41A*</b>	3½	3½	100,000	208-230/1/61	47½	51½	42½	76	545
<b>APD1448100M41A*</b>	4	4	100,000	208-230/1/61	47½	51½	42½	76	545

<sup>1</sup> Tons <sup>2</sup> BTU/h

Goodman Manufacturing Company, L.P. reserves the right to discontinue, or change at any time, specifications or designs without notice or without incurring obligations.

**Limited Warranty\***

\* Complete warranty details available from your local dealer or at [www.amana-hac.com](http://www.amana-hac.com). To receive the Lifetime Heat Exchanger Limited Warranty, the Lifetime Compressor Limited Warranty (in each case, good for as long as you own your home) and 10-Year Parts Limited Warranty, online registration must be completed within 60 days of installation. Online registration is not required in California or Quebec.



The **Amana** brand APD14M Packaged Gas-Electric Unit contains a high-efficiency compressor and multi-speed blower motor. The two-stage gas valve allows for easy conversion from natural gas to propane gas. The APD14M is designed for the consumer who desires comfort and quiet operation.

**Standard Features**

- Combines cooling with heat pump and gas heating for optimal year-long performance
- High-efficiency scroll compressor
- Heavy-duty stainless-steel heat exchanger
- Multi-speed ECM indoor blower motor
- All-Aluminum evaporator coil
- Copper tube/aluminum fin coil
- Compressor sound blanket
- Two-stage gas valve; natural gas with easy conversion to propane with accessory kit
- Power-assisted combustion
- Direct spark ignition system includes a microprocessor-based control for the entire ignition sequence
- All blower operation and all safety circuits complete with self-diagnostics
- Loss-of-charge protection
- All models comply with California Low NO<sub>x</sub> emission standards
- AHRI Certified; ETL Listed

**Cabinet Features**

- Fully insulated heavy-gauge, zinc-coated steel cabinet with UV-resistant powder-paint finish
- Aluminum foil-facing internal insulation reinforced with fiberglass scrim
- Louvered metal panel condenser coil protection
- Horizontal or downflow application
- Convenient access panels
- One roof curb fits all units
- Bottom, 2" high base rails for easy handling
- All models fit a standard-size pick-up truck
- When properly anchored, meets the 2001 Florida Building Code unit integrity requirements for hurricane-type winds (Anchor bracket kits available.)
- One footprint for all tonnages









# CONTROLS AND THERMOSTATS

## CTK04 / ComfortNet® High-Definition Communicating Control System

**ComfortNet®**  The **ComfortNet** brand CTK04 touchscreen digital control works with **Goodman®** brand **ComfortNet** Communicating Control System compatible heating and cooling systems in both residential and commercial applications.

### Product Features

- Advanced modulation control
- Adjustable heat pump balance point
- Adjustable auxiliary heat lock-out
- Adjustable continuous four-speed fan
- Full color display
- Commercial/residential selection option
- On-board dehumidification capability
- Humidification control
- Humidifier type selection (with Honeywell TrueSTEAM™)
- Wireless humidification option (with RedLINK™ outdoor sensor)
- Window frost/condensation protection (with RedLINK™ outdoor sensor)
- Southern dehumidification control
- Multiple commercial dehumidification options
- Indoor temperature averaging (with RedLINK™ indoor sensor(s))
- Device naming option
- Outdoor temperature display
- Outdoor humidity display (with RedLINK™ outdoor sensor)
- Wireless accessory capability
- Multi-lingual (English, French, Spanish)
- Air filter maintenance reminder
- UV lamp maintenance reminder
- Humidifier pad maintenance reminder
- Electronic air cleaner maintenance reminder
- Continuous backlight
- Adjustable backlight & contrast
- Temperature display adjustment
- Humidity display adjustment
- Temperature display °F or °C
- Max. heat & min. cool set-point temperatures
- Max./min. temperature/humidity alerts
- User interaction log (historical)
- Advanced staging control
- Heat and cool cycle rate adjustable
- Energy management recovery
- Internet access
- Home-screen theme options
- Customizable home screen
- Keypad lock-out options
- Auto-display dimming option
- Dealer information capability
- USB upload dealer information & set-up



\* Complete warranty details available from your local dealer or at [www.goodmanmfg.com](http://www.goodmanmfg.com). To receive the 10-Year Control Limited Warranty, the control must be installed in conjunction with a new furnace or air handler containing a communicating system that is compatible with the control and, if that furnace/air handler is a **Goodman®** or **Amana®** brand unit, that furnace/air handler must have been registered online within 60 days of installation of the furnace/air handler. Failure by Quebec or California residents to have registered a **Goodman** or **Amana** brand furnace/air handler does not diminish their warranty rights.

### ComfortNet Communicating Control System Compatible Product Families

- Air Conditioners: AVXC20, ASXC18, ASXC16
- Heat Pumps: AVZC20, AVZC18, ASZC18, ASZC16
- Gas Furnaces: AMVM97, ACVM97, AMVC96, ACVC96, AMVC8, ACVC8
- Air Handlers: AVPEC, AVPVC, AVPTC, MBVC

### Compatible with

- RedLINK™
- Amazon Alexa
- Google Home
- IFTTT

## AT4272/AT4273 / Touchscreen / High-Resolution full color Display / Built-in Wi-Fi



\* Complete warranty details available from your local dealer or at [www.amana-hac.com](http://www.amana-hac.com).

### Product Features for All Models

- Built-in Wi-Fi with downloadable remote control apps
- Customizable wallpaper and slide show\*
- Built-in nature and holiday wallpaper themes
- Customizable service alerts
- “Simple as you want” operation with easy-to-read display
- TouchScreen assistant for fast and easy programming
- SD memory card slot for easy importing and exporting of thermostat data, including copying data between thermostats\*
- At-a-glance screen lets users see temperature and heating/cooling status
- Programmable fan and night-time dimmer
- 7-Day programmable scheduler
- Switchable programmable or non-programmable
- Up to 4 heat & 2 cool stages
- Automatic daylight savings adjustments
- 7-Day energy usage graph
- Passcode security for screen lock and set-point limits
- Multiple languages: English, Spanish, and French
- Gas/electric or heat pump control
- Universal compatibility including dual fuel

### AT4273 Features

- Controls humidification & dehumidification

\* SD card not included.

[illegible]



[illegible]

[illegible]



**Amana** Heating & Air Conditioning

## ComfortHome™ automation

### Practical Home Automation

The **ComfortHome™** suite of automation products provides the solution to control your home's vital systems from your smartphone – instantly notifying you of potential issues and providing you with the tools to act quickly.



[www.comforthomeconnect.com](http://www.comforthomeconnect.com)

## CLEAN COMFORT® INDOOR AIR ESSENTIALS

### Pure. Clean. Air.

Indoor comfort in your home is about more than just adjusting the temperature on the thermostat. Many homeowners overlook the need for necessary components and systems that can improve the indoor air you breathe.



[www.cleancomfort.com](http://www.cleancomfort.com)

## AMANA IS SOCIAL!



Like us on **Facebook!**  
[facebook.com/AmanaHVAC](https://facebook.com/AmanaHVAC)



Follow us on **Twitter!**  
[twitter.com/Amana\\_HVAC](https://twitter.com/Amana_HVAC)

Amana brand products average **4.7 out of 5** stars in homeowner satisfaction with thousands of reviews captured on Amana brand Heating and Air Conditioning products.

### Don't just take our word for it...

See the reviews on

[www.amana-hac.com/reviews](http://www.amana-hac.com/reviews).



### Additional information

Before purchasing this appliance, read important information about its estimated annual energy consumption, yearly operating cost, or energy efficiency rating that is available from your retailer.

**[www.amana-hac.com](http://www.amana-hac.com)**

Our continuing commitment to quality products may mean a change in specifications without notice. © 2018 Goodman Company, L.P. Amana is a registered trademark of Maytag Corporation or its related companies and is used under license. All rights reserved.

CT-AMANA 09-18